



Zetland, NSW

203/8 Ebsworth Street

2
BED

1
BATH



West Facing, 2-Bedroom Apartment in 'No 8 Ovo' with Exclusive Rooftop Access!

This 81sqm, 2nd floor apartment features:

- Well-appointed bedrooms with built-in wardrobes
- Spacious open-plan living and dining area, flowing onto balcony
- Sleek designer kitchen with stone benchtops and built-in European appliances
- Modern bathroom with plenty of vanity storage
- Internal laundry with dryer included
- Ducted air-conditioning, video intercom and NBN connectivity
- 300m to Woolworths, Green Square Train Station (10mins to the City) + Library and 650m to Gunyama Park Aquatic and Recreation Centre

\$1000 Per Week

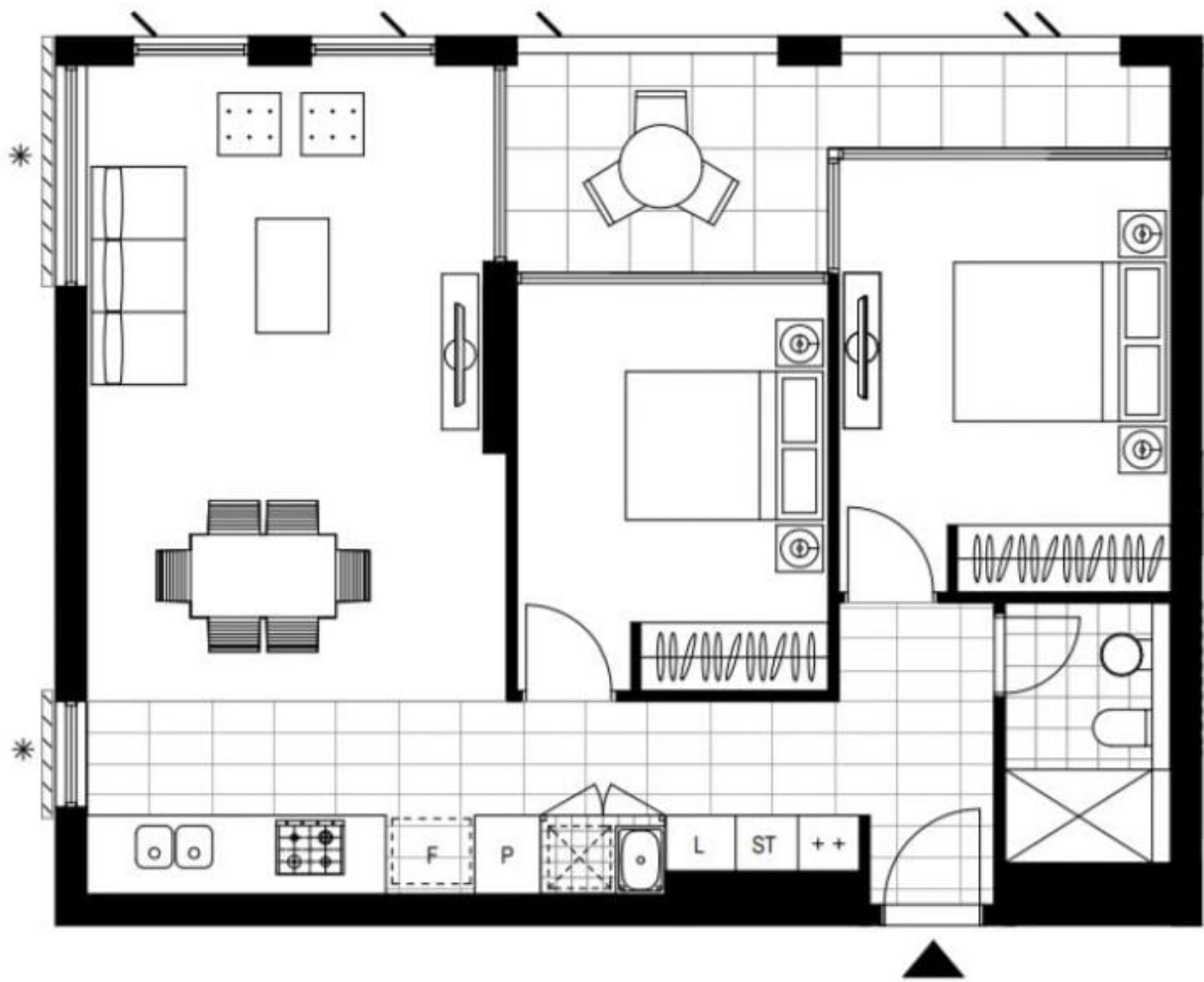
View: Sat, 2 Nov 2024 @ 10:20 am - 10:40 am

Contact: Kevin Tam
02 8588 8888
0481 735 222

Type: Apartment

Date Available: 19/11/2024

<https://www.resbymirvac.com>



Plans shown are only indicative of layout. Dimensions are approximate.

Zetland, NSW
203/8 Ebsworth Street