



Glebe, NSW

103/6 Maxwell Road

2 2 1
BED BATH CAR



Rare Park Facing 2-Bedroom Apartment in Maxwell Place, Harold Park

Welcome to Harold Park!

Here in Harold Park you will find yourself in an idyllic parkside location, with only a short walk to Glebe Foreshore. Just meters away, The Tramsheds retail precinct resides featuring cafes, a grocery store, restaurants and a medical centre.

This 2-Bedroom apartment features:

- Well-appointed bedrooms with generous built-in wardrobes
- Spacious tiled living/dining area opening up to a private balcony
- Modern island kitchen with stone benchtop and built-in Miele appliances

\$1,100 per week

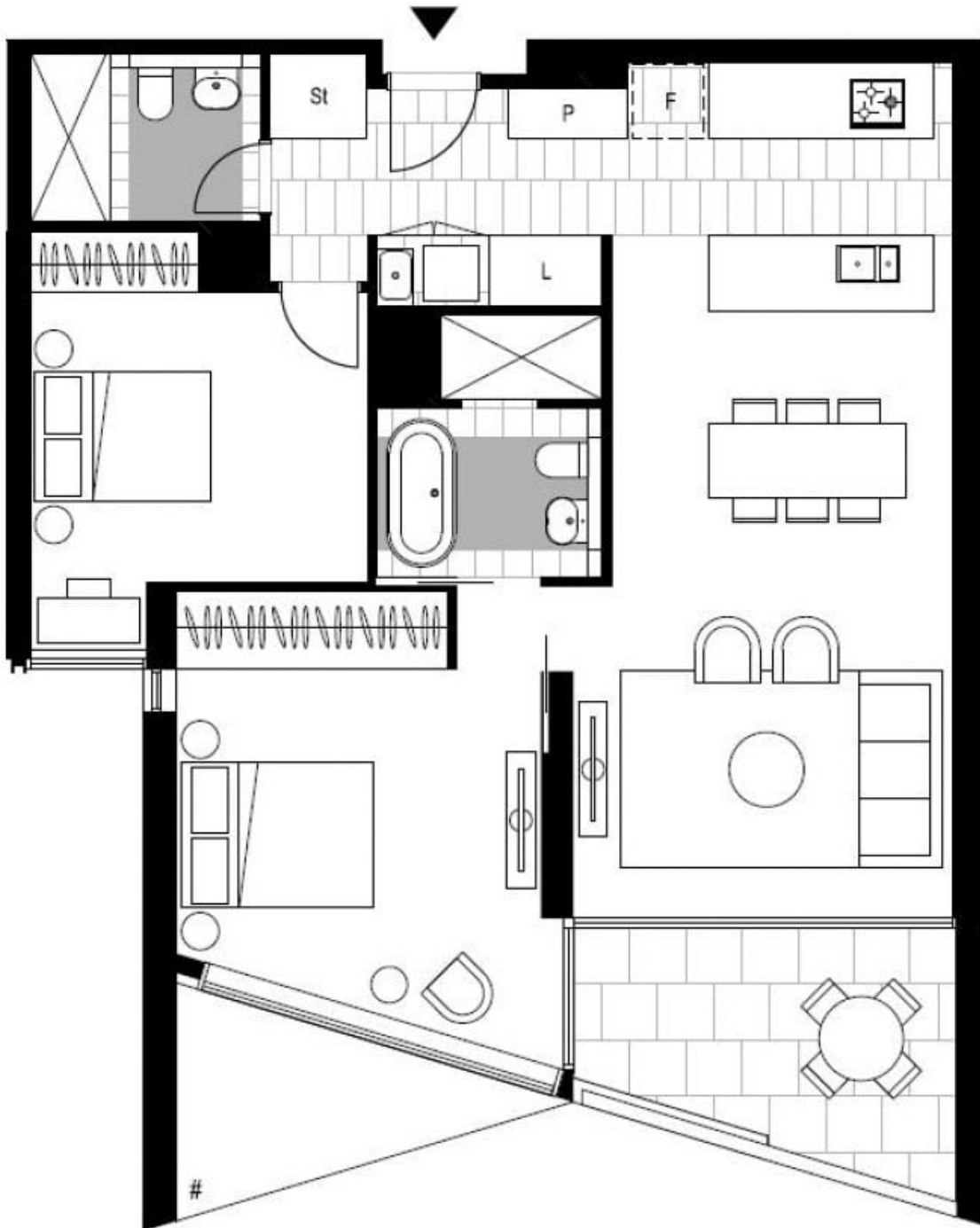
Contact: Naz Sabzpouri
02 8588 8888
0401 545 440

Type: Apartment

Date Available: 04/12/2024

Bond: \$4400

<https://www.resbymirvac.com>



Plans shown are only indicative of layout. Dimensions are approximate.

Glebe, NSW
103/6 Maxwell Road