

Glebe, NSW

6301/162 Ross Street

1
BED

1
BATH



Garden Facing 1-Bedroom Apartment in Harold Park

Welcome to Harold Park, Glebe's Secret Backyard.

In the charming enclave of Harold Park, you'll discover a picturesque parkside setting, just a leisurely stroll from Glebe Foreshore. Merely steps away, The Tramsheds retail precinct beckons, boasting delightful cafes, a boutique grocery store, renowned restaurants, and even a convenient medical centre. Plus, enjoy close proximity to the light rail, schools, and the city, all just a short distance away, ensuring convenience and connectivity at your fingertips.

This 54sqm, 3rd floor Apartment offers;

- Large bedroom with floor to ceiling built-in wardrobe

\$730 per week

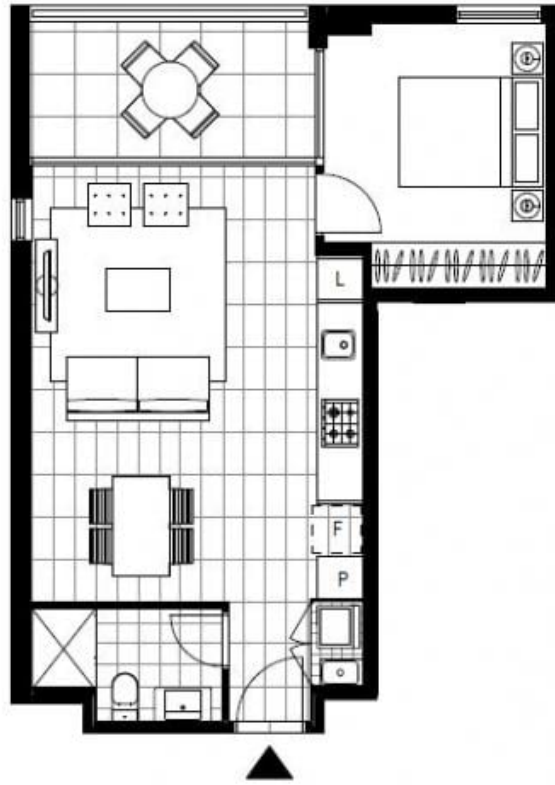
Contact: Naz Sabzpour
02 8588 8888
0401 545 440

Type: Apartment

Date Available: 30/11/2024

Bond: \$2920

<https://www.resbymirvac.com>



▲
LEVEL 3

Plans shown are only indicative of layout. Dimensions are approximate.

Glebe, NSW
6301/162 Ross Street