

Glebe, NSW

7512/2 Cullen Close

1
BED

1
BATH



Contemporary 1-Bedroom Apartment in Harold Park

Welcome to Harold Park, Glebe's Secret Backyard.

Here in Harold Park you will find yourself in an idyllic parkside location, with only a short walk to Glebe Foreshore. Just meters away, The Tramsheds retail precinct resides featuring cafes, a grocery store, restaurants and a medical centre

This 63sqm, 5th floor Apartment has to offer:

- Large bedroom with floor to ceiling built-in wardrobe
- Balcony with view over internal gardens
- Stone benchtops and Miele appliances in kitchen
- Modern bathroom with vanity storage
- Open plan living and dining area

\$730 per week

View: Sat, 2 Nov 2024 @10:20 am - 10:40 am

Contact: Naz Sabzpour

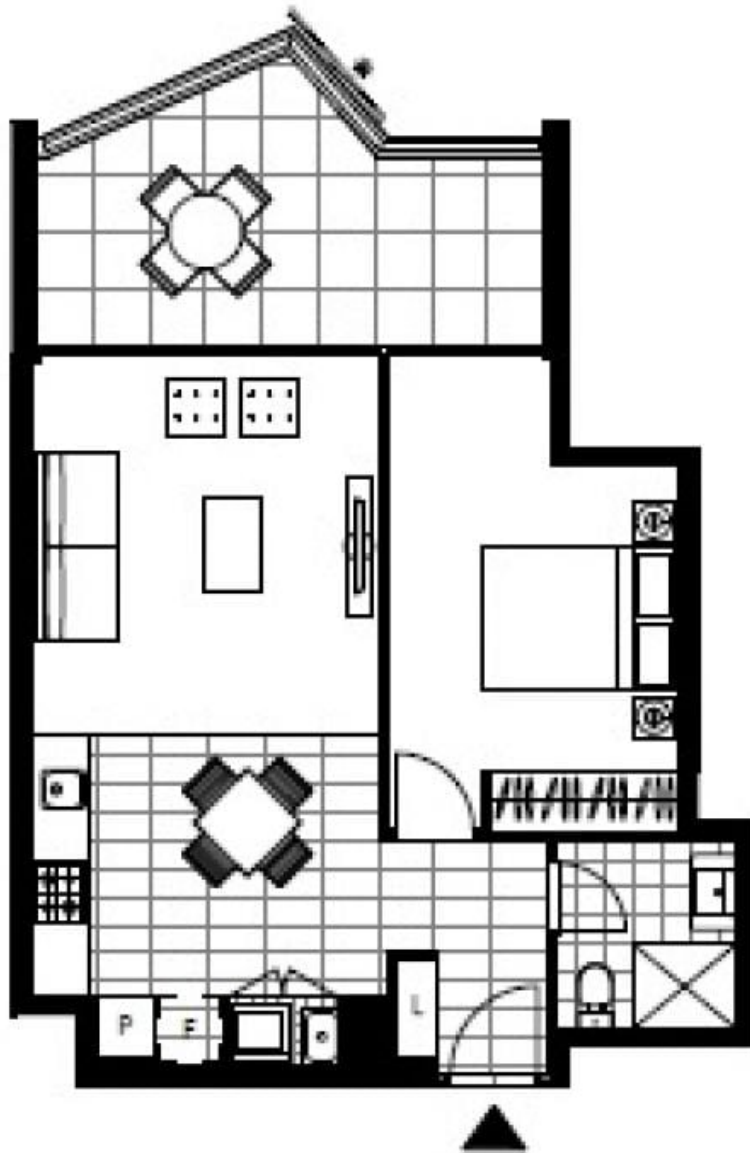
02 8588 8888

0401 545 440

Type: Apartment

Date Available: 13/11/2024

<https://www.resbymirvac.com>



LEVEL 2, 4, 5, 6

Plans shown are only indicative of layout. Dimensions are approximate.

Glebe, NSW
7512/2 Cullen Close