

## Zetland, NSW

202/960 Bourke Street

**1**  
BED

**1**  
BATH



### Contemporary 1 Bedroom Apartment in Heart of Green Square

Welcome to Green Square, where urban sophistication meets community living.

Centrally located in the heart of Green Square, Portman Place puts you just steps away from delightful cafes, boutique shops, and easily accessible public transport, including Green Square train station. Residents can enjoy acclaimed amenities such as the cutting-edge Gunyama Aquatic and Recreation Centre and the Green Square Library, all within a short stroll. Portman Place also provides an exclusive courtyard on level 2 for residents, offering a private outdoor retreat

This 58sqm, Mirvac apartment features:

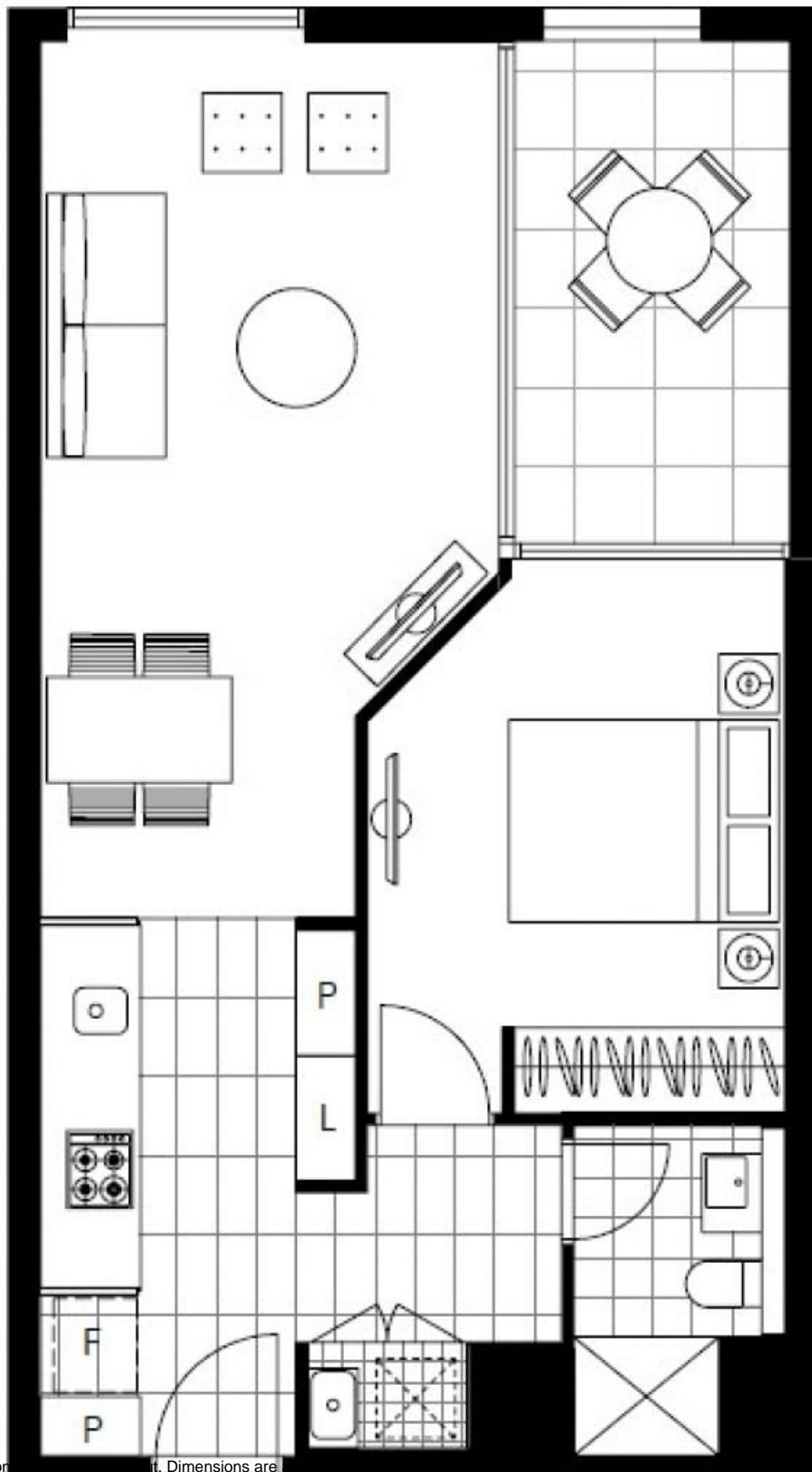
**\$850 per week**

**Contact:** Kevin Tam  
02 8588 8888  
0481 735 222

**Type:** Apartment

**Date Available:** 26/10/2024

**<https://www.resbymirvac.com>**



Plans shown are on a scale of 1:50. Dimensions are in feet.

**Zetland, NSW**  
202/960 Bourke Street