



Glebe, NSW
809/159 Ross Street

2 **2** **1** 
BED BATH CAR

Park Facing 2-Bedroom Apartment In Harold Park!

Welcome to Harold Park, Glebe's Secret Backyard.

Here in Harold Park you will find yourself in an idyllic parkside location, with only a short walk to Glebe Foreshore. Just meters away, The Tramsheds retail precinct resides featuring cafes, a grocery store, restaurants and a medical centre.

This top floor Apartment offers:

- Spacious bedrooms with built-in wardrobes
- Open-plan living and dining area
- Stone benchtops and Miele appliances in kitchen
- Sunny balcony with park views, perfect for entertaining

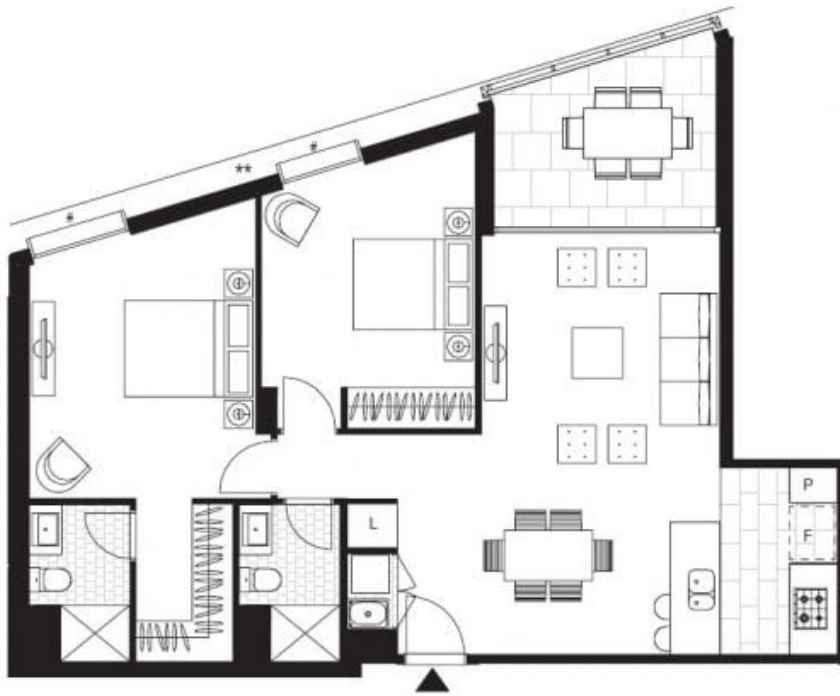
\$1,290 per week | Parking Included

Contact: Naz Sabzpouri
02 8588 8888
0401 545 440

Type: Apartment

Date Available: 27/12/2024

<https://www.resbymirvac.com>



LEVEL 8

Plans shown are only indicative of layout. Dimensions are approximate.

Glebe, NSW
809/159 Ross Street