



Glebe, NSW

7115/2 Cullen Close

1
BED

1
BATH



Modern One bedroom apartment in Mirvac's Harold Park!

Welcome to Harold Park, Glebe's Secret Backyard.

Here in Harold Park you will find yourself in an idyllic parkside location, with only a short walk to Glebe Foreshore. Just meters away, The Tramsheds retail precinct resides featuring cafes, a grocery store, restaurants and a medical centre.

This 55sqm apartment features:

- Large bedroom with floor to ceiling built-in wardrobe
- Well-appointed balcony
- Stone bench top and Miele appliances in kitchen

\$700 per week

View: Sat, 26 Oct 2024 @ 11:00 am - 11:20 am

Contact: Naz Sabzpouri

02 8588 8888

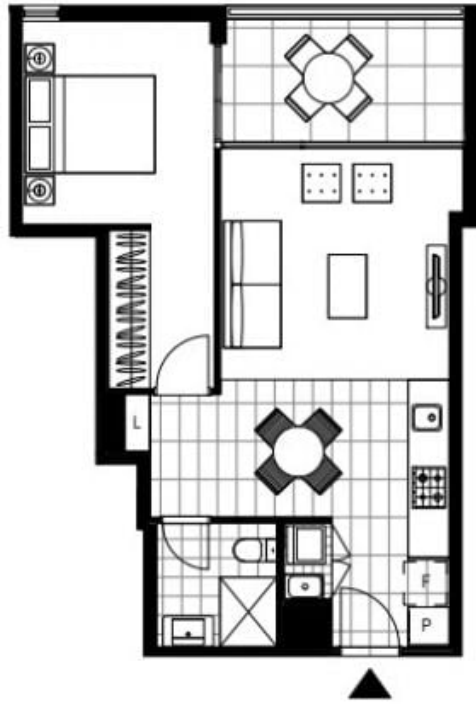
0401 545 440

Type: Unit

Date Available: 05/11/2024

Bond: \$2800

<https://www.resbymirvac.com>



LEVEL 1

Plans shown are only indicative of layout. Dimensions are approximate.

Glebe, NSW
7115/2 Cullen Close