



Glebe, NSW

505/95 Ross Street

3 BED **2** BATH **2** CAR 

North-East Park Facing, 3 Bedroom Apartment in Harold Park by Mirvac

Welcome to Harold Park, Glebe's Secret Backyard.

In the charming enclave of Harold Park, you'll discover a picturesque parkside setting, just a leisurely stroll from Glebe Foreshore. Merely steps away, The Tramsheds retail precinct beckons, boasting delightful cafes, a boutique grocery store, renowned restaurants, and even a convenient medical centre. Plus, enjoy close proximity to the light rail, schools, and the city, all just a short distance away, ensuring convenience and connectivity at your fingertips.

This 130sqm, 5th floor apartment features:

\$1,575 per week | Park Facing

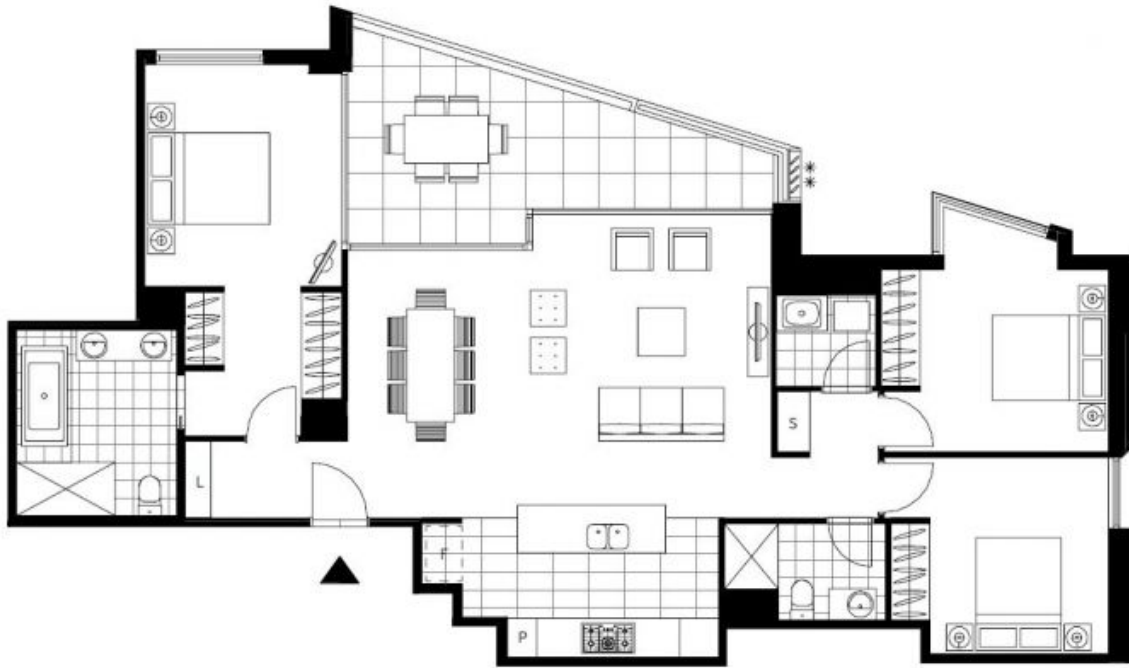
Contact: Naz Sabzpour
02 8588 8888
0401 545 440

Type: Apartment

Date Available: 11/11/2024

Bond: \$6300

<https://www.resbymirvac.com>



Plans shown are only indicative of layout. Dimensions are approximate.

Glebe, NSW
505/95 Ross Street