

BOOK YOUR INSPECTION TODAY

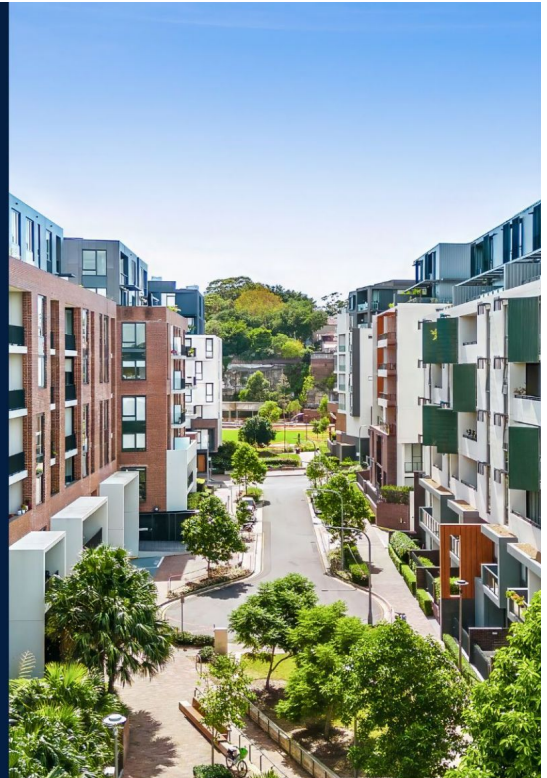
Inspections are available from Monday to Saturday via appointment. Call us to book your private inspection today!



Naz Sabzpouri

0401 545 440

naz.sabzpouri@resbymirvac.com



PROXIMITY TO EXCEPTIONAL AMENITIES

Short walking distance to 'Tramsheds', featuring dining restaurants & cafes, a market & gym* (parking not included). Close proximity to Glebe Foreshore and Jubilee Park light rail stop.



Glebe, NSW 317/19 Minougue Crescent

1 BED 1 BATH



North Facing, 1 Bedroom Apartment in Mirvac's Harold Park!

Welcome to Harold Park, Glebe's Secret Backyard.

In the charming enclave of Harold Park, you'll discover a picturesque parkside setting, just a leisurely stroll from Glebe Foreshore. Merely steps away, The Tramsheds retail precinct beckons, boasting delightful cafes, a boutique grocery store, renowned restaurants, and even a convenient medical centre. Plus, enjoy close proximity to the light rail, schools, and the city, all just a short distance away, ensuring convenience and connectivity at your fingertips.

This 3rd Level apartment features:

\$750 per week

View: Sat, 26 Oct 2024 @ 11:40 am - 12:00 pm

Contact: Naz Sabzpouri

02 8588 8888

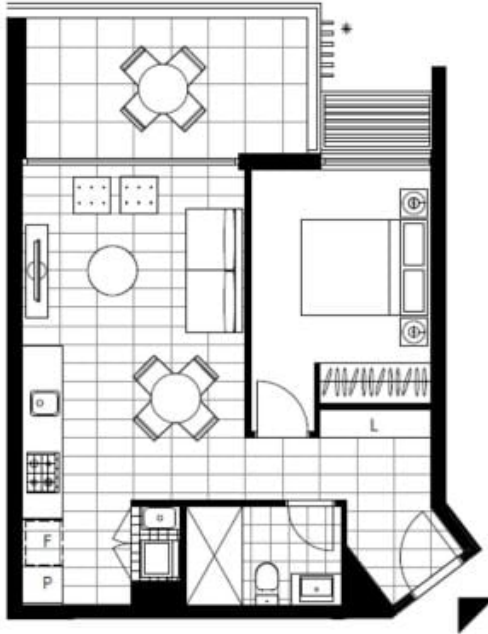
0401 545 440

Type: Apartment

Date Available: 17/10/2024

Bond: \$3000

<https://www.resbymirvac.com>



Please note that this floor plan is a guide only.
The information contained herein is not guaranteed.
Dimensions are approximate.
Prospective renters must rely on their own enquiries.

317/19 Minogue Cres, Glebe



Plans shown are only indicative of layout. Dimensions are approximate.

Glebe, NSW
317/19 Minogue Crescent