



**Glebe, NSW**  
609/2 Scotsman Street

**1** BED **1** BATH



**Beautifully Furnished 1 Bedroom Apartment in Sought After 'Harold Park' Development by Mirvac**

Welcome to Harold Park, Glebe's Secret Backyard.

In the charming enclave of Harold Park, you'll discover a picturesque parkside setting, just a leisurely stroll from Glebe Foreshore. Merely steps away, The Tramsheds retail precinct beckons, boasting delightful cafes, a boutique grocery store, renowned restaurants, and even a convenient medical centre. Plus, enjoy close proximity to the light rail, schools, and the city, all just a short distance away, ensuring convenience and connectivity at your fingertips.

This 54sqm, furnished apartment features:

**Deposit Taken | \$790 per week | Furnished**

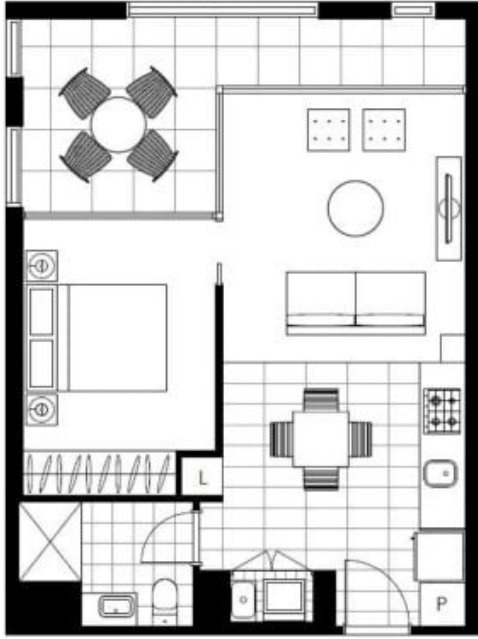
**Contact:** Naz Sabzpour  
02 8588 8888  
0401 545 440

**Type:** Apartment

**Date Available:** 13/11/2024

**Bond:** \$3160

<https://www.resbymirvac.com>



Please note that this floor plan is a guide only.  
The information contained herein is not guaranteed.  
Dimensions are approximate.  
Prospective renters must rely on their own enquiries.

609/2 Scotsman St, Glebe

    
1 1 0

 real estate  
services  
by mirvac

Plans shown are only indicative of layout. Dimensions are approximate.

**Glebe, NSW**  
609/2 Scotsman Street