



Glebe, NSW
302/6 Maxwell Road

2 **2** **1** **RES**
BED BATH CAR

Sunny Park Facing 2 Bedroom Apartment in Premium 'Maxwell Place' Building in Harold Park

Welcome to Harold Park, Glebe's Secret Backyard.

In the charming enclave of Harold Park, you'll discover a picturesque parkside setting, just a leisurely stroll from Glebe Foreshore. Merely steps away, The Tramsheds retail precinct beckons, boasting delightful cafes, a boutique grocery store, renowned restaurants, and even a convenient medical centre. Plus, enjoy close proximity to the light rail, schools, and the city, all just a short distance away, ensuring convenience and connectivity at your fingertips.

This 2-bedroom, 3rd floor apartment features:

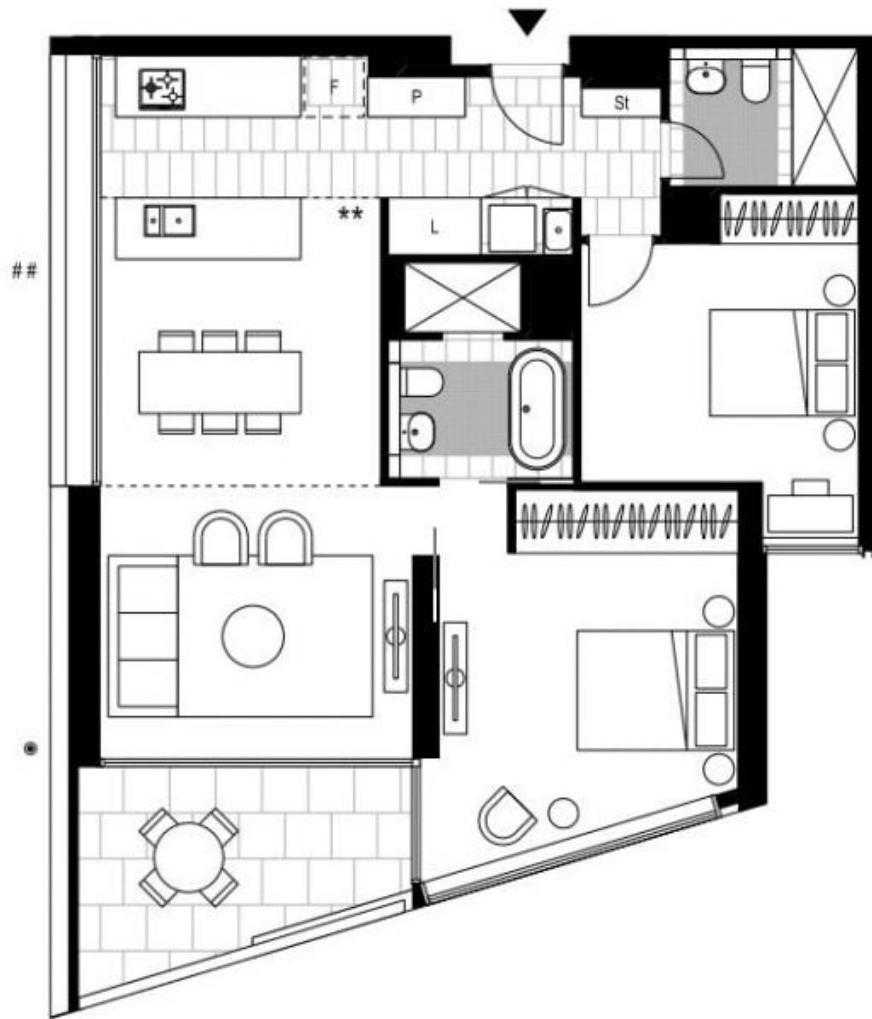
Deposit Taken | \$1,200 per week

Contact: Naz Sabzpour
02 8588 8888
0401 545 440

Type: Apartment

Date Available: 04/11/2024

<https://www.resbymirvac.com>



Plans shown are only indicative of layout. Dimensions are approximate.

Glebe, NSW
302/6 Maxwell Road