



Sydney Olympic Park, NSW

20501/2 Figtree Drive

2 BED **2** BATH **1** CAR 

Contemporary 2 Bedroom Apartment with Parking in 'Pavilions' by Mirvac

Welcome to Pavilions in Sydney Olympic Park

Discover the unparalleled allure of Sydney Olympic Park, where Pavilions by Mirvac offers a lifestyle of convenience and luxury. Nestled amidst vibrant parklands, trendy cafes, and world-class sporting facilities, residents enjoy proximity to an array of amenities. As a resident of Pavilions by Mirvac, you'll have exclusive access to a gym, co-working space, and a dedicated children's play area, ensuring every aspect of your lifestyle is catered to with style and sophistication.

This 91sqm, 2 bedroom features:

\$860 per week

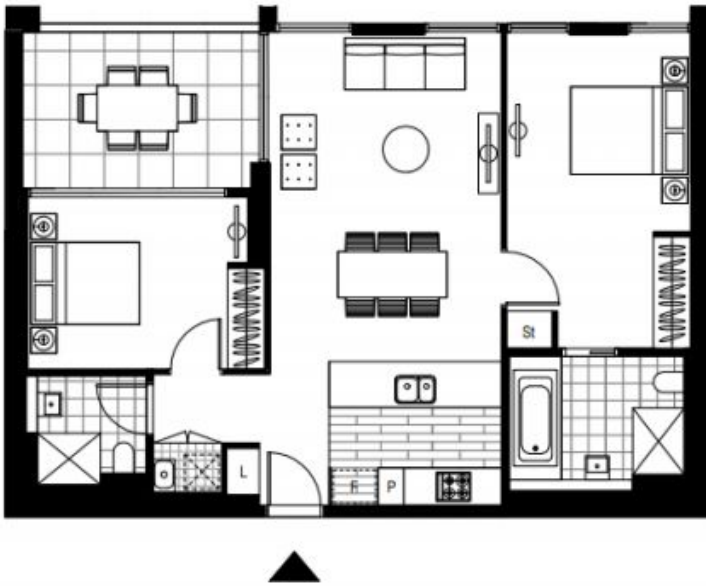
View: Sat, 26 Oct 2024 @ 12:35 pm - 12:50 pm
Wed, 30 Oct 2024 @ 12:35 pm - 12:50 pm

Contact: Christine Howison
02 8588 8888
0459 222 085
Eunice Teo
02 8588 8888
0481 440 088

Type: Apartment

Date Available: 10/10/2024

<https://www.resbymirvac.com>



Please note that this floor plan is a guide only.
The information contained herein is not guaranteed.
Dimensions are approximate.
Prospective renters must rely on their own enquiries.

20501/2 Figtree Drive, Sydney Olympic Park

  
2 2 1

 real estate
services
by mirvac

Plans shown are only indicative of layout. Dimensions are approximate.

Sydney Olympic Park, NSW
20501/2 Figtree Drive