



**Glebe, NSW**  
310/172 Ross Street

**3** BED **2** BATH **2** CAR 

### Spacious 3 -Bedroom Apartment in Mirvac's Harold Park!

Welcome to Harold Park, Glebe's Secret Backyard.

In the charming enclave of Harold Park, you'll discover a picturesque parkside setting, just a leisurely stroll from Glebe Foreshore. Merely steps away, The Tramsheds retail precinct beckons, boasting delightful cafes, a boutique grocery store, renowned restaurants, and even a convenient medical centre. Plus, enjoy close proximity to the light rail, schools, and the city, all just a short distance away, ensuring convenience and connectivity at your fingertips.

This 137sqm apartment offers:

### \$1,500 per week | Parking Included

**View:** Sat, 26 Oct 2024 @ 1:00 pm - 1:20 pm

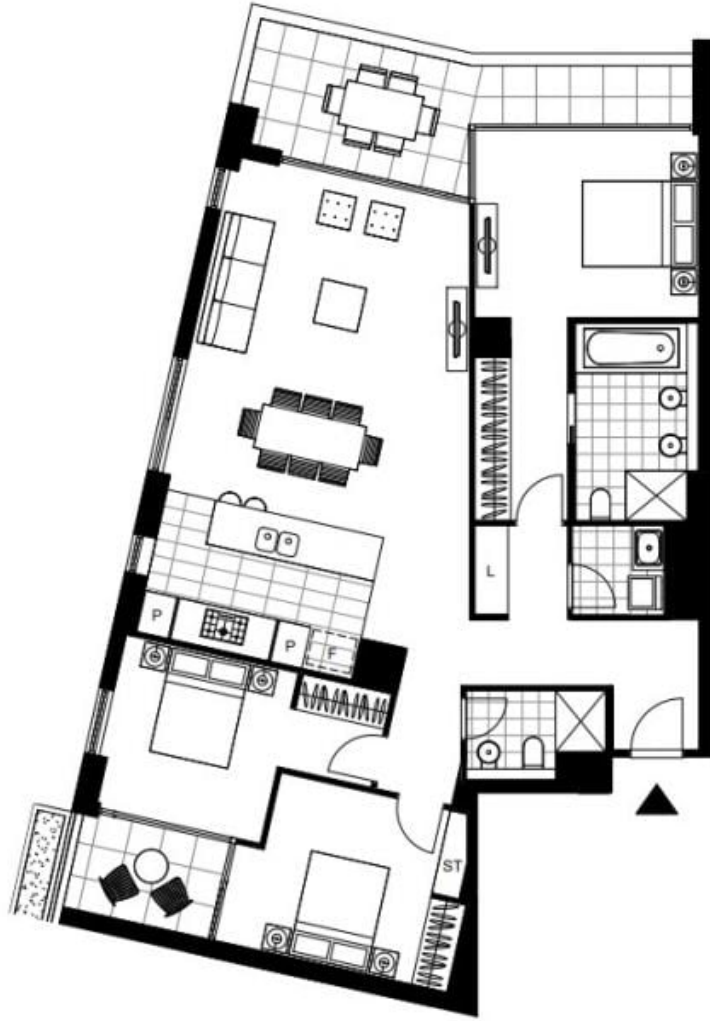
**Contact:** Naz Sabzpouri  
02 8588 8888  
0401 545 440

**Type:** Apartment

**Date Available:** 24/10/2024

**Bond:** \$6000

<https://www.resbymirvac.com>



Plans shown are only indicative of layout. Dimensions are approximate.

**Glebe, NSW**  
310/172 Ross Street