



**Glebe, NSW**  
712/105 Ross Street

**1** BED **1** BATH



**Rare Two-Storey Apartment with Separate Study Room + Terrace in Harold Park**

Welcome to Harold Park, Glebe's Secret Backyard.

In the charming enclave of Harold Park, you'll discover a picturesque parkside setting, just a leisurely stroll from Glebe Foreshore. Merely steps away, The Tramsheds retail precinct beckons, boasting delightful cafes, a boutique grocery store, renowned restaurants, and even a convenient medical centre. Plus, enjoy close proximity to the light rail, schools, and the city, all just a short distance away, ensuring convenience and connectivity at your fingertips.

**Deposit Taken | \$860 per week | Separate study!**

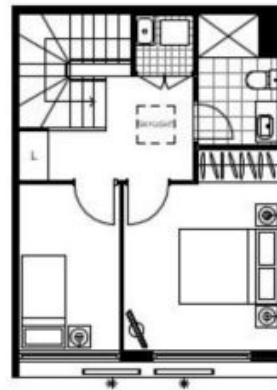
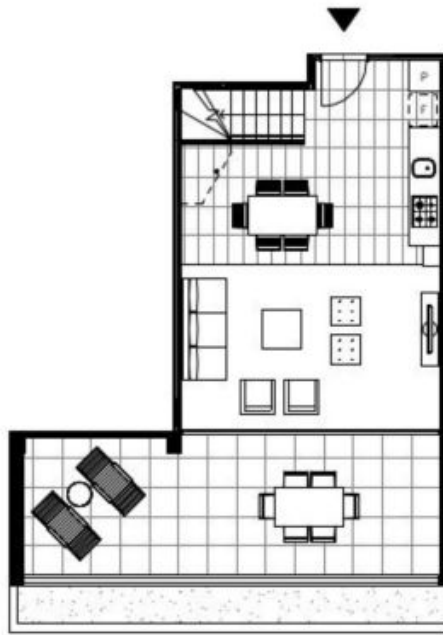
**Contact:** Naz Sabzpouri  
02 8588 8888  
0401 545 440

**Type:** Apartment

**Date Available:** 06/11/2024

**<https://www.resbymirvac.com>**

This 100sqm, 7th floor apartment features:



Please note that this floor plan is a guide only  
The information contained herein is not guaranteed.  
Dimensions are approximate.  
Prospective renters must rely on their own enquiries.

712/105 Ross St, Glebe



1+S 1 0



Plans shown are only indicative of layout. Dimensions are approximate.

**Glebe, NSW**  
712/105 Ross Street