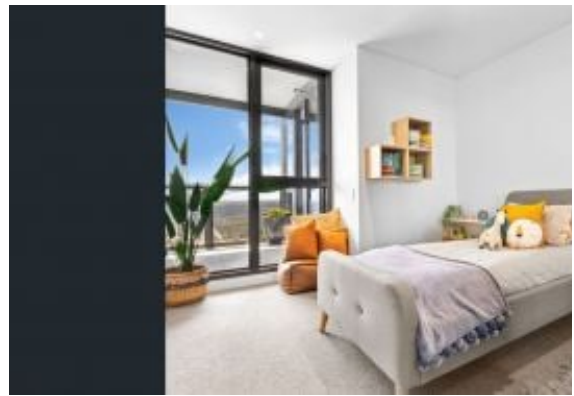




real estate
services
by mirvac



Sydney Olympic Park, NSW

23002/2 Figtree Drive

3
BED

2
BATH

2
CAR



Sun-Filled 3 Bedroom Apartment on 30th Floor in 'Pavilions', Sydney Olympic Park

Welcome to Pavilions in Sydney Olympic Park

Discover the unparalleled allure of Sydney Olympic Park, where Pavilions by Mirvac offers a lifestyle of convenience and luxury. Nestled amidst vibrant parklands, trendy cafes, and world-class sporting facilities, residents enjoy proximity to an array of amenities. As a resident of Pavilions by Mirvac, you'll have exclusive access to a gym, co-working space, and a dedicated children's play area, ensuring every aspect of your lifestyle is catered to with style and sophistication.

This Level 30, 140sqm apartment features:

Deposit Taken

Contact: Christine Howison
02 8588 8888
0459 222 085
Eunice Teo
02 8588 8888
0481 440 088

Type: Apartment

Date Available: 12/10/2024

<https://www.resbymirvac.com>



Please note that this floor plan is a guide only.
The information contained herein is not guaranteed.
Dimensions are approximate.
Prospective renters must rely on their own enquiries.

32002/2 Figtree Drive, Sydney Olympic Park

  
3 2 2

 real estate
services
by mirvac

Plans shown are only indicative of layout. Dimensions are approximate.

Sydney Olympic Park, NSW
23002/2 Figtree Drive