

**Sydney Olympic Park, NSW**  
21805/2 Figtree Drive

**2** BED **2** BATH **1** CAR



**Level 18 North Facing 2 Bedroom Apartment in Pavilions By Mirvac**

Welcome to Pavilions in Sydney Olympic Park

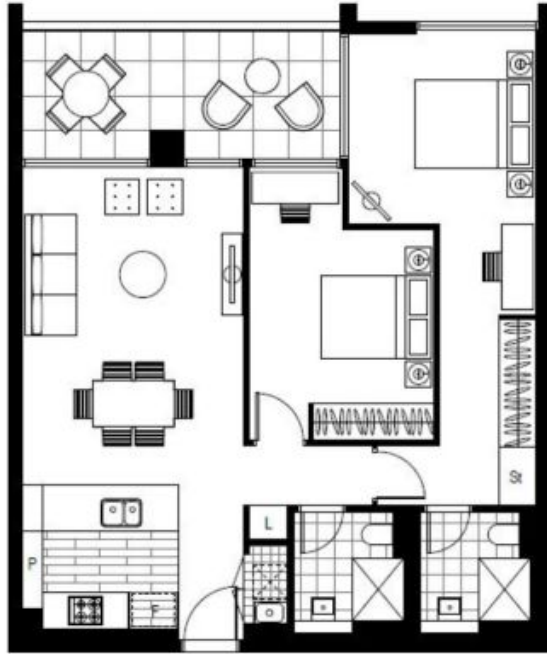
Discover the unparalleled allure of Sydney Olympic Park, where Pavilions by Mirvac offers a lifestyle of convenience and luxury. Nestled amidst vibrant parklands, trendy cafes, and world-class sporting facilities, residents enjoy proximity to an array of amenities. As a resident of Pavilions by Mirvac, you'll have exclusive access to a gym, co-working space, and a dedicated children's play area, ensuring every aspect of your lifestyle is catered to with style and sophistication.

**\$870 per week**

**Contact:** Christine Howison  
02 8588 8888  
0459 222 085  
Eunice Teo  
02 8588 8888  
0481 440 088

**Type:** Apartment  
**Date Available:** 30/09/2025  
**Bond:** \$3480  
**<https://www.resbymirvac.com>**

This Level 18, 90sqm apartment features:



Please note that this floor plan is a guide only  
The information contained herein is not guaranteed.  
Dimensions are approximate.  
Prospective renters must rely on their own enquiries.

21805/2 Figtree Dr, Sydney Olympic Park



Plans shown are only indicative of layout. Dimensions are approximate.

**Sydney Olympic Park, NSW**  
21805/2 Figtree Drive