

Docklands, VIC

505/100 Lorimer Street

1 **1** **1** **RES**
BED BATH CAR

Top Floor Podium Array Abode

Utmost opulence and incomparable panoramic views are the defining qualities of this stunning North/East facing 1 bedroom 1 bathroom Yarra's Edge apartment. Do not miss out on this opportunity to purchase this expansive living space with jaw dropping waterviews of the marina that can never be built out!

This stunning Mirvac development is absolutely first class offering ultra high ceilings which are offered to the level 5 podium apartments in the building, making the property unique and hard to come by!

Contemporary apartment living with a generous living and dining areas including study nook for a home office option, a gourmet kitchen for any budding chef completed with stone benchtops and Smeg stainless steel appliances.

\$580,000 - \$610,000

Contact: Andrew Chen
03 9645 1199
0490 816 861
Joe Qiao
03 9645 1199
0408 288 542

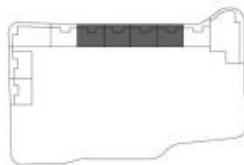
Type: Apartment
<https://www.resbymirvac.com>



LEVEL 3,4,5

- APT 3.03
- APT 3.04
- APT 3.05
- APT 3.06
- APT 4.03
- APT 4.04
- APT 4.05
- APT 4.06
- APT 5.03
- APT 5.04
- APT 5.05
- APT 5.06

LOCATION PLAN



PODIUM 1 BEDROOM

Internal Area 55 m²
Balcony Area 12 m²
Total Area 67 m²

Area subject to final survey, area includes balcony and/or terrace unless specified. It excludes parking and external storage areas.



Please note that this floor plan is a guide only and may be required prior to completion. The information contained herein is believed to be correct but is not guaranteed. Dimensions are approximate and areas are calculated in accordance with the Property Council of Australia Method of Measurement. Boundaries of boundaries are taken from the outer edge of the building. Living room dimensions are indicative only and purchasers should view fixtures on sample boards. Changes will undoubtedly be made during the development and dimensions, areas, fittings and finishes amongst others are subject to change without notice in accordance with the provisions of the contract of sale. 31/01/21A.

Plans shown are only indicative of layout. Dimensions are approximate.

Level 3 shown

For further enquiries
call 03 9645 9400 or visit
arraybymirvac.com

Docklands, VIC
505/100 Lorimer Street