



Docklands, VIC

1808/103 South Wharf Drive

2 BED **1** BATH **1** CAR 

Gorgeous apartment in voyager building

Welcome to Yarra's Edge, Docklands' most prestigious riverside community.

A part of the tallest, newest and most prestigious building in the Yarra's Edge precinct, this Mirvac-built Voyager apartment is set to impress. Embracing a sleek and stylish aesthetic, it has been designed with an emphasis on generous light-filled interiors and seamless open plan indoor/outdoor entertaining.

Apartment features:

- Spacious bedrooms with built-in wardrobes
- Open-plan living and dining area, with access to balcony/ideal for entertaining

\$710 per week

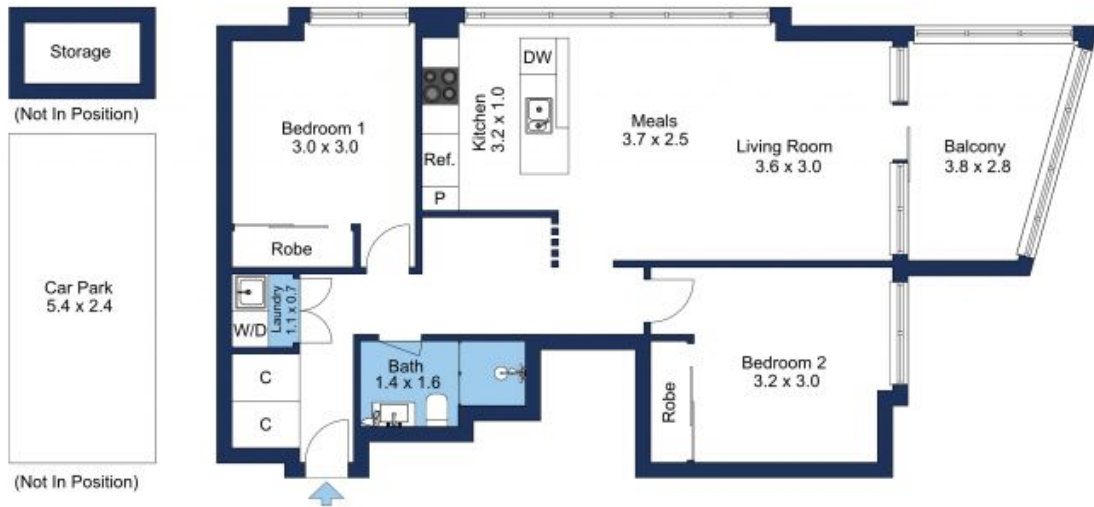
View: Tue, 10 Sep 2024 @5:10 pm - 5:30 pm
Thu, 12 Sep 2024 @5:10 pm - 5:30 pm

Contact: Emily Gray
03 9645 1199
0408 527 174
Aleisha Clark
03 9645 1199
0491 174 507

Type: Apartment

Date Available: 07/10/2024

<https://www.resbymirvac.com>



The floor plan is not to scale; measurements are indicative and in metres. Exterior elements are not in position. Plans should not be relied on. Interested parties should make and rely on their own enquiries.

Plans shown are only indicative of layout. Dimensions are approximate.

Docklands, VIC
1808/103 South Wharf Drive