



Glebe, NSW

601/5 Grattan Close

1
BED

1
BATH



Garden Facing 1-Bedroom Apartment in Harold Park

Welcome to Harold Park, Glebe's Secret Backyard.

In the charming enclave of Harold Park, you'll discover a picturesque parkside setting, just a leisurely stroll from Glebe Foreshore. Merely steps away, The Tramsheds retail precinct beckons, boasting delightful cafes, a boutique grocery store, renowned restaurants, and even a convenient medical centre. Plus, enjoy close proximity to the light rail, schools, and the city, all just a short distance away, ensuring convenience and connectivity at your fingertips.

This 51sqm, 6th floor apartment has to offer:

- Large bedroom with floor to ceiling built-in wardrobe

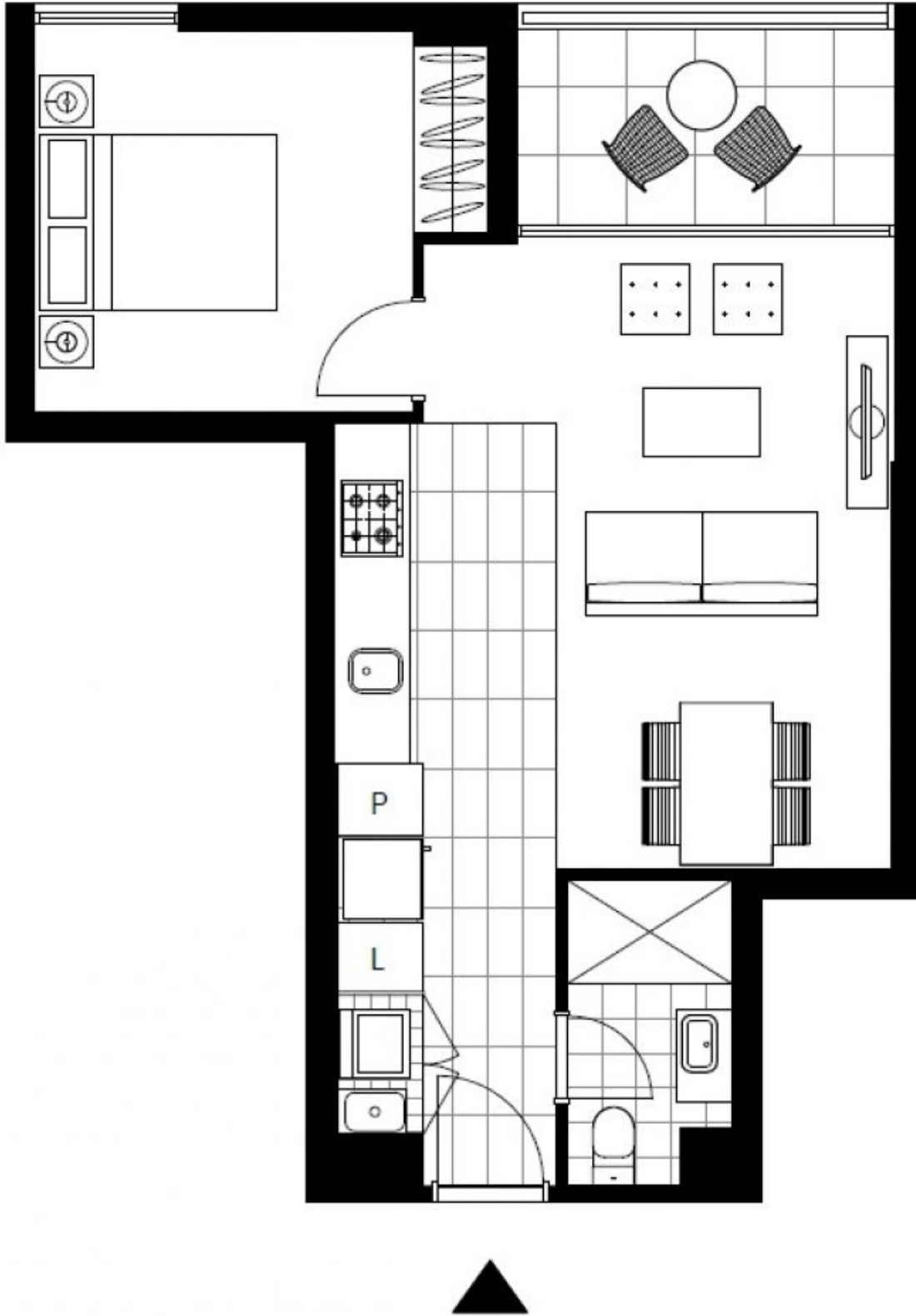
\$720 per week

Contact: Naz Sabzpouri
02 8588 8888
0401 545 440

Type: Apartment

Date Available: 04/09/2024

<https://www.resbymirvac.com>



Plans shown are only indicative of layout. Dimensions are approximate.

Glebe, NSW
601/5 Grattan Close