



**Glebe, NSW**  
5309/148 Ross Street

**1** **1**  
BED BATH



### Contemporary 1 Bedroom Apartment in Harold Park, Glebe

Welcome to Harold Park, Glebe's Secret Backyard. Here in Harold Park you will find yourself in an idyllic parkside location, with only a short walk to Glebe Foreshore. Just meters away, The Tramsheds retail precinct resides featuring cafes, a grocery store, restaurants and a medical centre.

This 57sqm, 3rd floor apartment features:

- Well-appointed bedroom with built-in wardrobes
- Spacious open-plan living and dining area, flowing onto balcony
- Modern kitchen with stone benchtop and built-in Miele appliances
- Sleek bathroom with plenty of vanity storage

**\$700 per week**

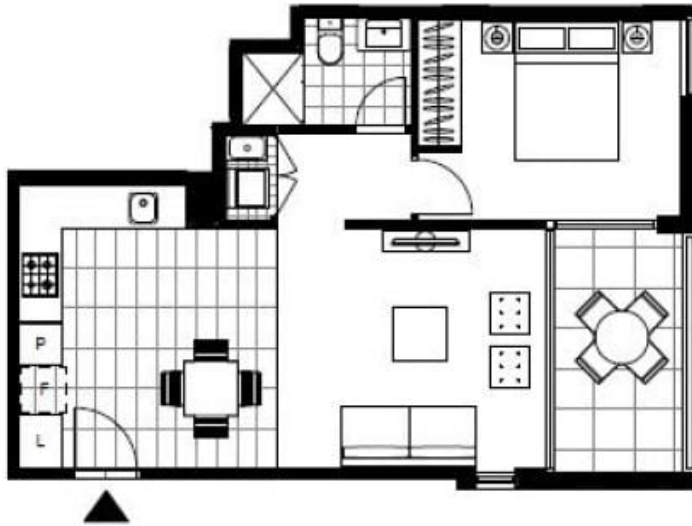
**Contact:** Naz Sabzpour  
02 8588 8888  
0401 545 440

**Type:** Apartment

**Date Available:** 28/09/2024

**Bond:** \$2800

<https://www.resbymirvac.com>



LEVEL 3

Plans shown are only indicative of layout. Dimensions are approximate.

**Glebe, NSW**  
5309/148 Ross Street