



East Melbourne, VIC
304/280 Albert Street

2 BED **2** BATH **1** CAR



Gorgeous 2 Bedroom apartment with garden views

Welcome to The Eastbourne, Melbourne's inner city Eden.

Discover inner-city luxury at The Eastbourne, Mirvac's flagship development in East Melbourne. Inspired by pavilions in the park, this residential sanctuary seamlessly connects to Fitzroy Gardens. Residents enjoy unmatched amenities: pool, spa, gym, steam room, yoga-pilates studio, private lounge, entertainer's kitchen and dining room, The Retreat, The Masters Club, and The Conservatory. Live the 6-star hotel experience in this historic neighborhood.

Apartment features:

- Generous bedrooms with generous/floor-to-ceiling built-in wardrobes
- Open-plan living and dining area, with access to balcony/ideal for entertaining

\$1,200 per week pw

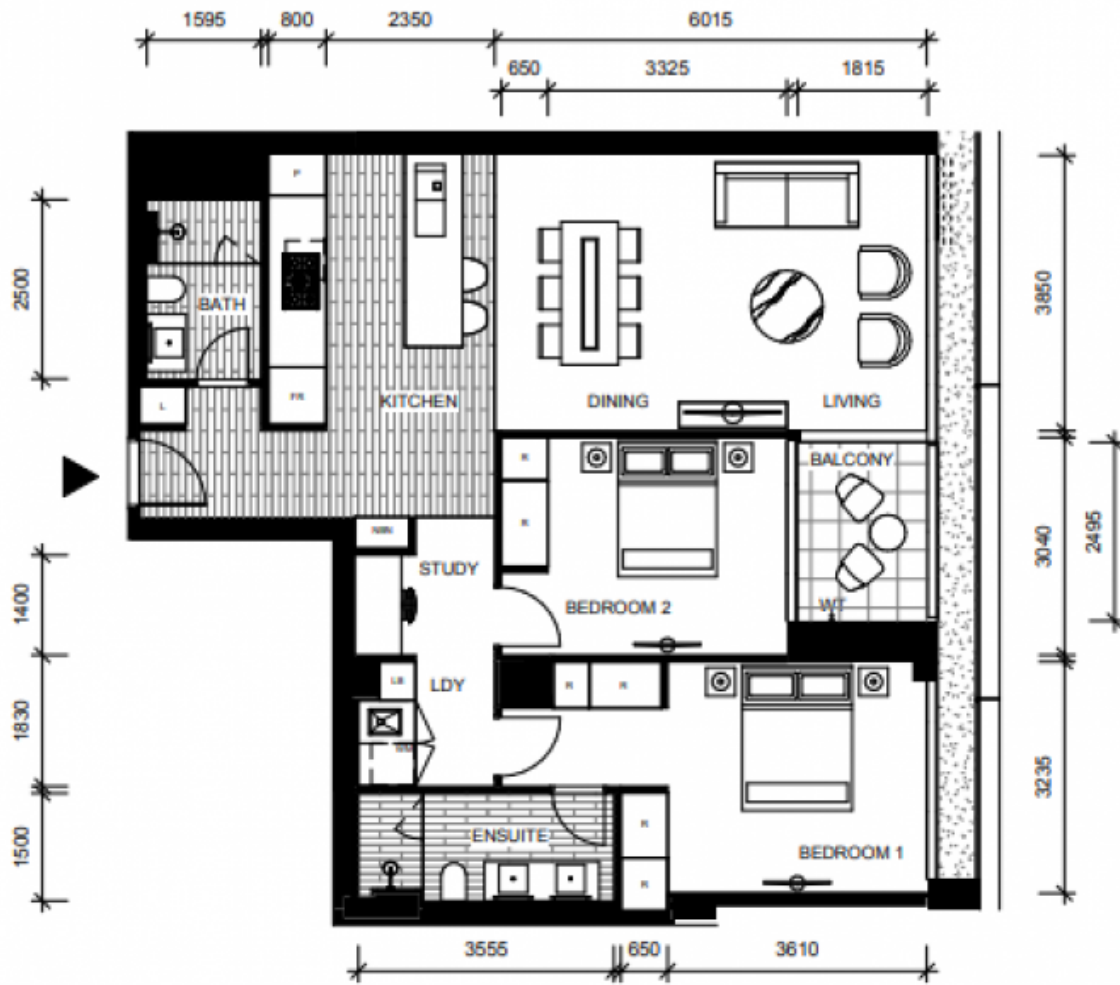
View: Thu, 5 Sep 2024 @12:00 pm - 12:20 pm

Contact: Aleiasha Clark
03 9645 1199
0491 174 507
Emily Gray
03 9645 1199
0408 527 174

Type: Apartment

Date Available: 16/10/2024

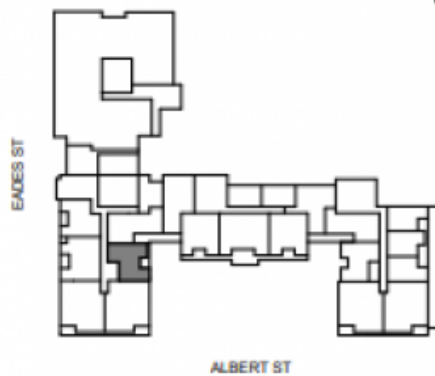
<https://www.resbymirvac.com>



LEVEL 2, 3, 4, 5

APT 2-04
APT 3-04
APT 4-04
APT 5-04


LOCATION PLAN

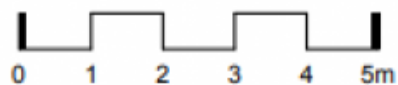


FOR CONSTRUCTION DIMENSIONED PLAN

**APARTMENT
2 BED 2 BATH**



-  Non Trafficable Roof
-  Landscaping
-  Privacy Screen - Opaque Glass Type 1
-  Privacy Screen - Opaque Glass Type 2
-  Privacy Screen - Interstitial Louvre



Plans shown are only indicative of layout. Dimensions are approximate.

East Melbourne, VIC
304/280 Albert Street