



Glebe, NSW
6306/162 Ross Street

2 BED **2** BATH **1** CAR 

North Facing 2- Bedroom Apartment in Harold Park

Welcome to Harold Park, Glebe's Secret Backyard.

Here in Harold Park you will find yourself in an idyllic parkside location, with only a short walk to Glebe Foreshore. Just meters away, The Tramsheds retail precinct resides featuring cafes, a grocery store, restaurants and a medical centre.

This 105sqm, 3rd floor Apartment features:

- Spacious bedrooms with generous built-in wardrobes
- Open-plan living and dining area, great for entertaining
- Contemporary kitchen with stone benchtops and Miele appliances
- Sleek bathrooms with plenty of vanity storage, bath in ensuite

\$1,180 per week | Parking included!

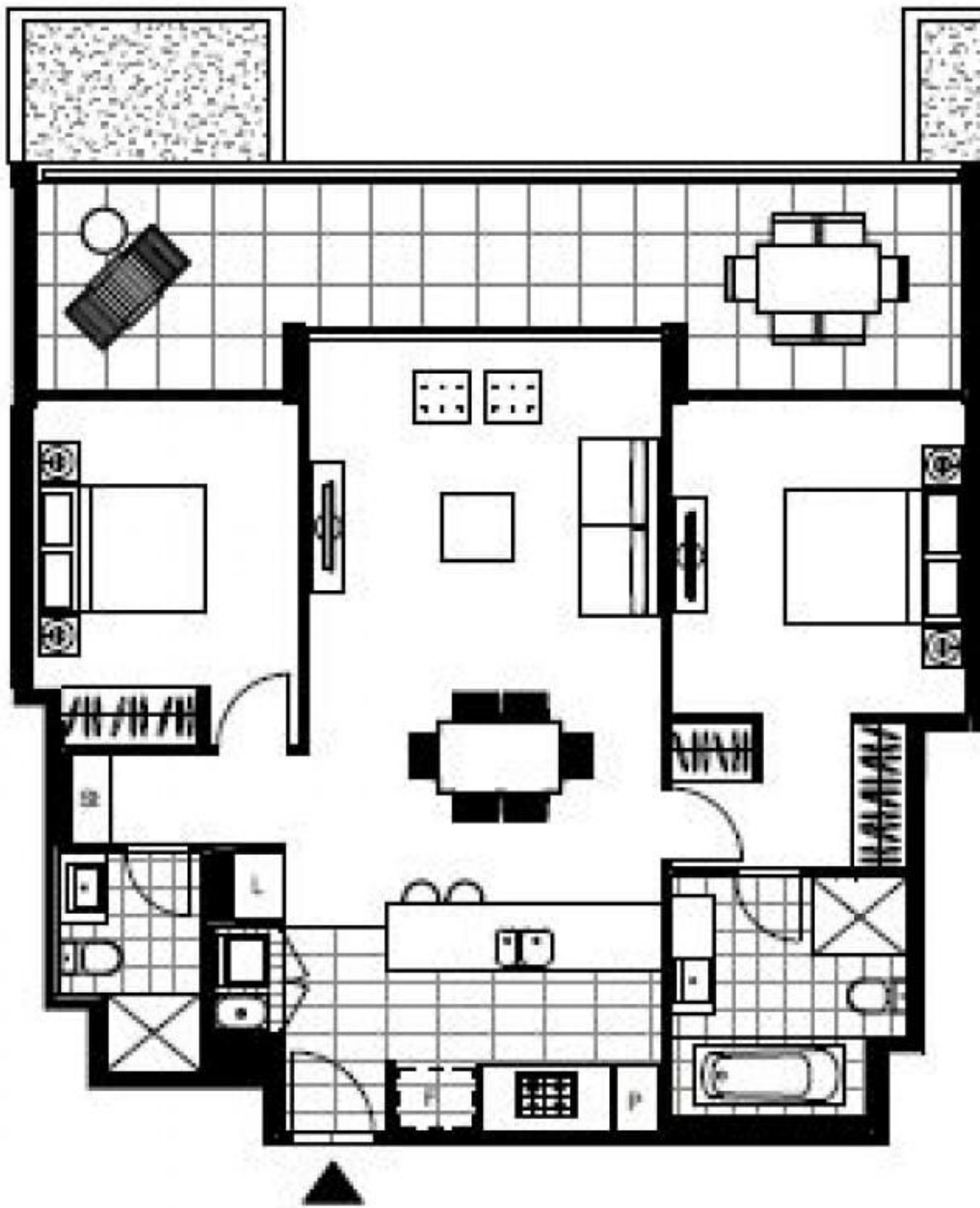
Contact: Naz Sabzpouri
02 8588 8888
0401 545 440

Type: Apartment

Date Available: 27/08/2024

Bond: \$4720

<https://www.resbymirvac.com>



Plans shown are only indicative of layout. Dimensions are approximate.

Glebe, NSW
6306/162 Ross Street