



**Zetland, NSW**  
806/8 Ebsworth Street

**2** BED **2** BATH **1** CAR 

**Elegant Two-Bedroom Apartment with Parking at Green Square**

Experience the pinnacle of urban sophistication with this spacious two-bedroom, two-bathroom plus media nook apartment in Mirvac's prestigious Green Square development. Nestled in Sydney's thriving new hub, this residence combines contemporary design with modern conveniences, making it perfect for professionals or small families. With easy access to Green Square Station, beautiful parks, and a vibrant retail scene, everyday living here is both luxurious and effortless.

- ? Open-plan living and dining area drenched in natural light.
- ? Two generously sized bedrooms with plush carpeting and built-in wardrobes.
- ? Cozy media nook, ideal for a study or small work-from-home space.

**Buyers Guide \$1,450,000**

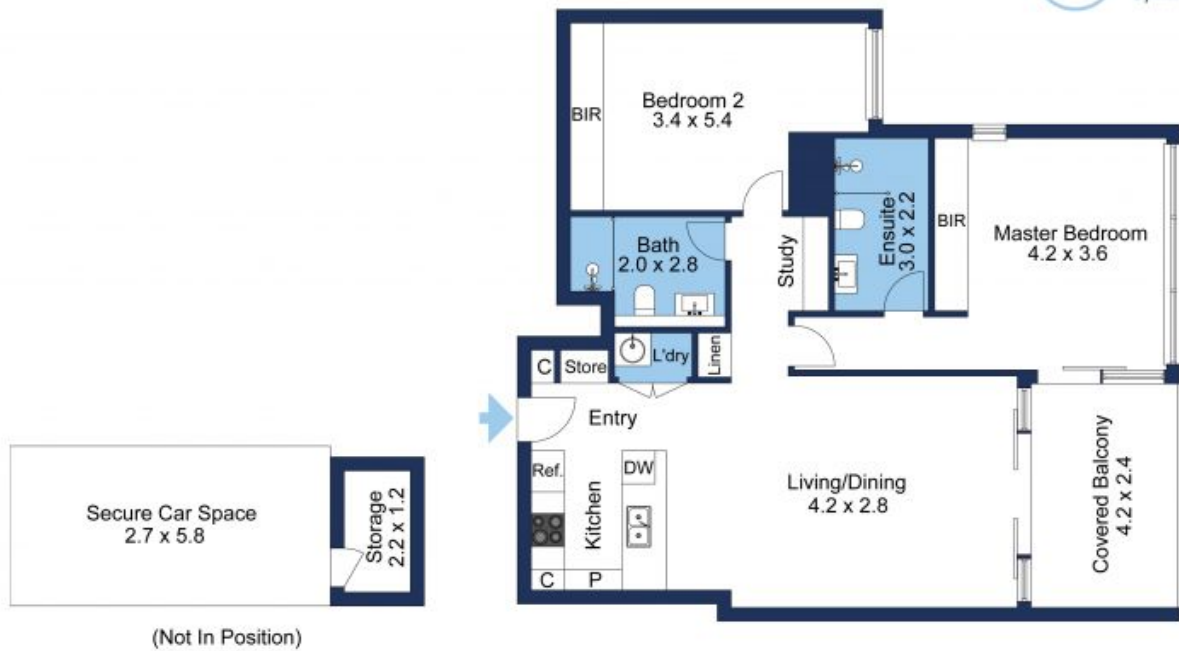
**Council Rates:** \$308/qtr (approx)

**Strata Rates:** \$1,421/qtr (approx)

**View:** Sat, 7 Sep 2024 @10:20 am - 10:40 am  
Sat, 14 Sep 2024 @10:20 am - 10:40 am  
Sat, 21 Sep 2024 @10:20 am - 10:40 am  
Sat, 28 Sep 2024 @10:20 am - 10:40 am

**Contact:** Emma Symonds  
02 8588 8888  
0412 660 011  
Dewen Li  
02 8588 8888  
0422 776 892

**Type:** Apartment  
**Land:** 91Square Metres  
<https://www.resbymirvac.com>



Internal Area	93 sqm
External Area	11 sqm
<b>Total Area</b>	<b>104 sqm</b>

The floor plan is not to scale; measurements are indicative and in metres. Exterior elements are not in position. Plans should not be relied on. Interested parties should make and rely on their own enquiries.

Plans shown are only indicative of layout. Dimensions are approximate.

**Zetland, NSW**  
 806/8 Ebsworth Street