



Glebe, NSW

601/1 Cullen Close

1
BED

1
BATH



North-facing, Sunny and Oversized 1-Bedroom Apartment in Harold Park

Welcome to Harold Park, Glebe's Secret Backyard.

Here in Harold Park you will find yourself in an idyllic parkside location, with only a short walk to Glebe Foreshore. Just meters away, The Tramsheds retail precinct resides featuring cafes, a grocery store, restaurants and a medical centre.

This 62sqm, 6th level apartment offers;

- Large bedroom with a generous built-in wardrobe
- Modern galley kitchen with a stone benchtop and Miele appliances
- Sleek bathroom with plenty of storage

DEPOSIT TAKEN | More available!

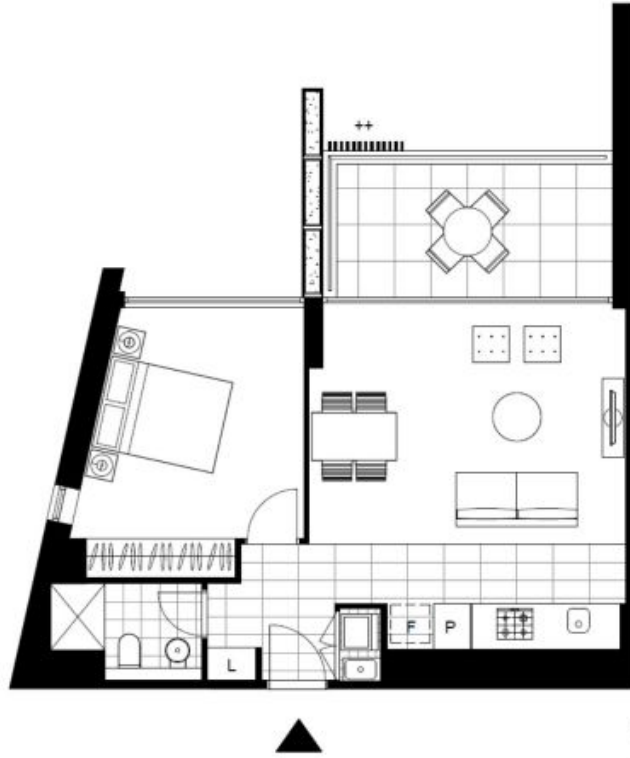
Contact: Naz Sabzpour
02 8588 8888
0401 545 440

Type: Apartment

Date Available: 22/08/2024

Bond: \$3000

<https://www.resbymirvac.com>



Please note that this floor plan is a guide only
The information contained herein is not guaranteed.
Dimensions are approximate.
Prospective renters must rely on their own enquiries.

601/1 Cullen Cl, Glebe



1 1 0



Plans shown are only indicative of layout. Dimensions are approximate.

Glebe, NSW
601/1 Cullen Close