



Docklands, VIC

1905/50 Lorimer Street

2 **2** **2** **RES**
BED BATH CAR

Perfectly situated 2 bedroom apartment with views

Welcome to Yarra's Edge, Docklands' most prestigious riverside community.

At Yarra's Edge, you'll enjoy a prime waterfront location just moments away from a variety of cafes, restaurants, parks, the picturesque Yarra's Edge promenade, and an IGA supermarket. Ideally situated between the river, city, and bay, this peaceful community features lush parklands and playgrounds, scenic waterfront boardwalks, health and wellness centres, as well as retail, dining, and Marina YE for a vibrant, well-rounded lifestyle.

Apartment Features:

- Spacious, well-appointed bedrooms with generous built-in wardrobes

\$870 per week

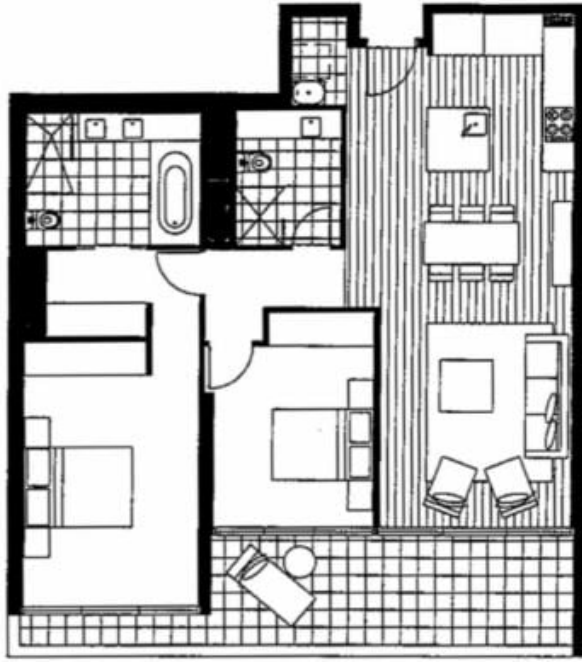
View: Thu, 15 Aug 2024 @ 1:30 pm - 1:50 pm

Contact: Emily Gray
03 9645 1199
0408 527 174
Aleisha Clark
03 9645 1199
0491 174 507

Type: Apartment

Date Available: 02/09/2024

<https://www.resbymirvac.com>



Please note that this floor plan is a guide only.
The information contained herein is not guaranteed.
Dimensions are approximate.
Prospective renters must rely on their own enquiries.

1905/50 Lorimer Street, Docklands



Plans shown are only indicative of layout. Dimensions are approximate.

Docklands, VIC
1905/50 Lorimer Street