



Glebe, NSW
308/1 Scotsman Street

2 **2** **1** **RES**
BED BATH CAR

Garden Facing 2-Bedroom Apartment near Tramsheds in Mirvac's Harold Park

Welcome to Harold Park, Glebe's Secret Backyard.

Here in Harold Park you will find yourself in an idyllic parkside location, with only a short walk to Glebe Foreshore. Just meters away, The Tramsheds retail precinct resides featuring cafes, a grocery store, restaurants and a medical centre.

This 91sqm, 3rd floor apartment features:

- Large bedrooms, both with floor to ceiling built-in wardrobes
- Open-plan living and dining area flowing onto balcony
- Modern kitchen with stone benchtop and built-in Miele appliances

DEPOSIT TAKEN | More available!

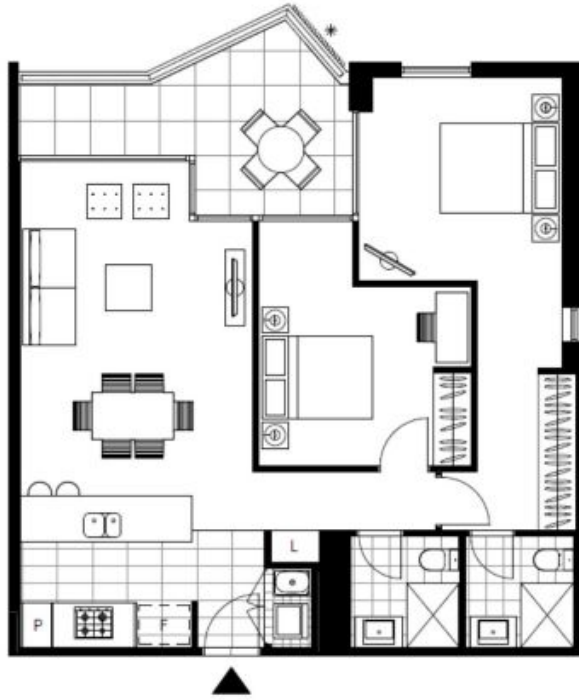
Contact: Naz Sabzpour
02 8588 8888
0401 545 440

Type: Apartment

Date Available: 30/07/2024

Bond: \$4000

<https://www.resbymirvac.com>



Please note that this floor plan is a guide only
The information contained herein is not guaranteed.
Dimensions are approximate.
Prospective renters must rely on their own enquiries.

308/1 Scotsman St, Glebe



Plans shown are only indicative of layout. Dimensions are approximate.

Glebe, NSW
308/1 Scotsman Street