



Docklands, VIC
2405/81 South Wharf Drive

2 BED **2** BATH **1** CAR



Yarra's Edge furnished abode with skyline views

Welcome to Yarra's Edge, Docklands' most prestigious riverside community.

Here in Yarra's Edge you will find yourself in an perfectly positioned waterfront location, only moments away from an array of cafes, restaurants, parks, Yarra's Edge promenade and IGA supermarket.

- This FURNISHED 2Bedroom apartment features;
- Spectacular views to Melbourne's city skyline, Yarra River and marina
 - Generous lounge and dining zone flowing to balcony
 - Galley style kitchen with ample storage
 - Prestige European kitchen appliances
 - Spacious bedrooms include built-in robe

COMING SOON

Contact: Aleiasha Clark
03 9645 1199
0491 174 507

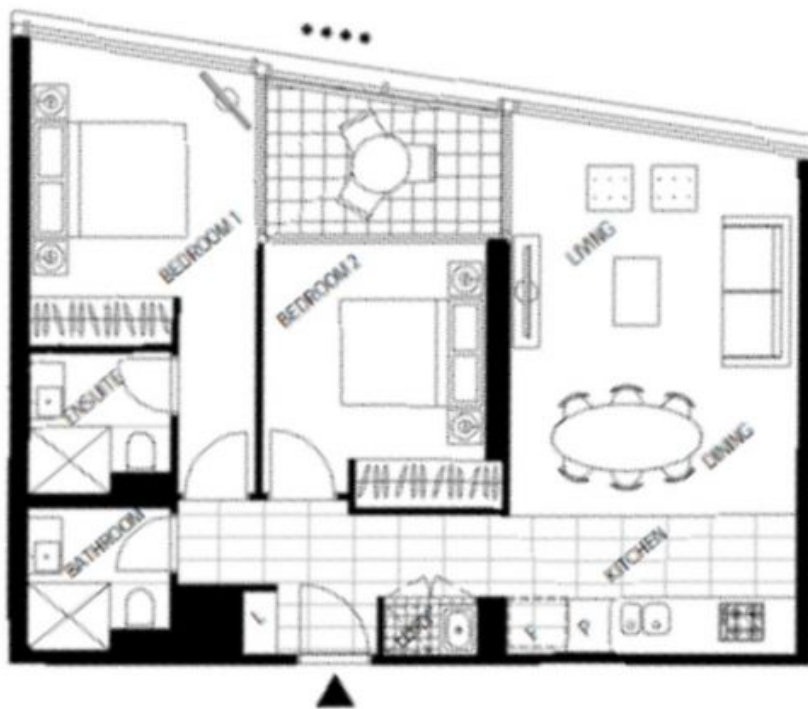
Type: Apartment
Date Available: 13/09/2024
<https://www.resbymirvac.com>



2

2

1



LEVEL 24

Please note that this floor plan is a guide only.
The information contained herein is not
guaranteed. Dimensions are approximate.
Prospective purchasers must rely on their own
enquiries.



real estate
services
by mirvac

2405/81 South Wharf Drive

DOCKLANDS

Plans shown are only indicative of layout. Dimensions are approximate.

Docklands, VIC
2405/81 South Wharf Drive