



## Glebe, NSW

507/162 Ross Street

**2** **2** **1** **RES**  
BED BATH CAR

### Modern and spacious 2-Bedroom with parking in Harold Park!

Welcome to Harold Park, Glebe's Secret Backyard.

Here in Harold Park you will find yourself in an idyllic parkside location, with only a short walk to Glebe Foreshore. Just meters away, The Tramsheds retail precinct resides featuring cafes, a grocery store, restaurants and a medical centre.

This 5th floor, 'Maestro' apartment features:

- Well-appointed bedrooms with built-in wardrobes
- Flowing open-plan living and dining area, with access to balcony
- Sleek kitchen with stone benchtops and built-in premium Miele appliances

**\$1,100 per week | Parking Included!**

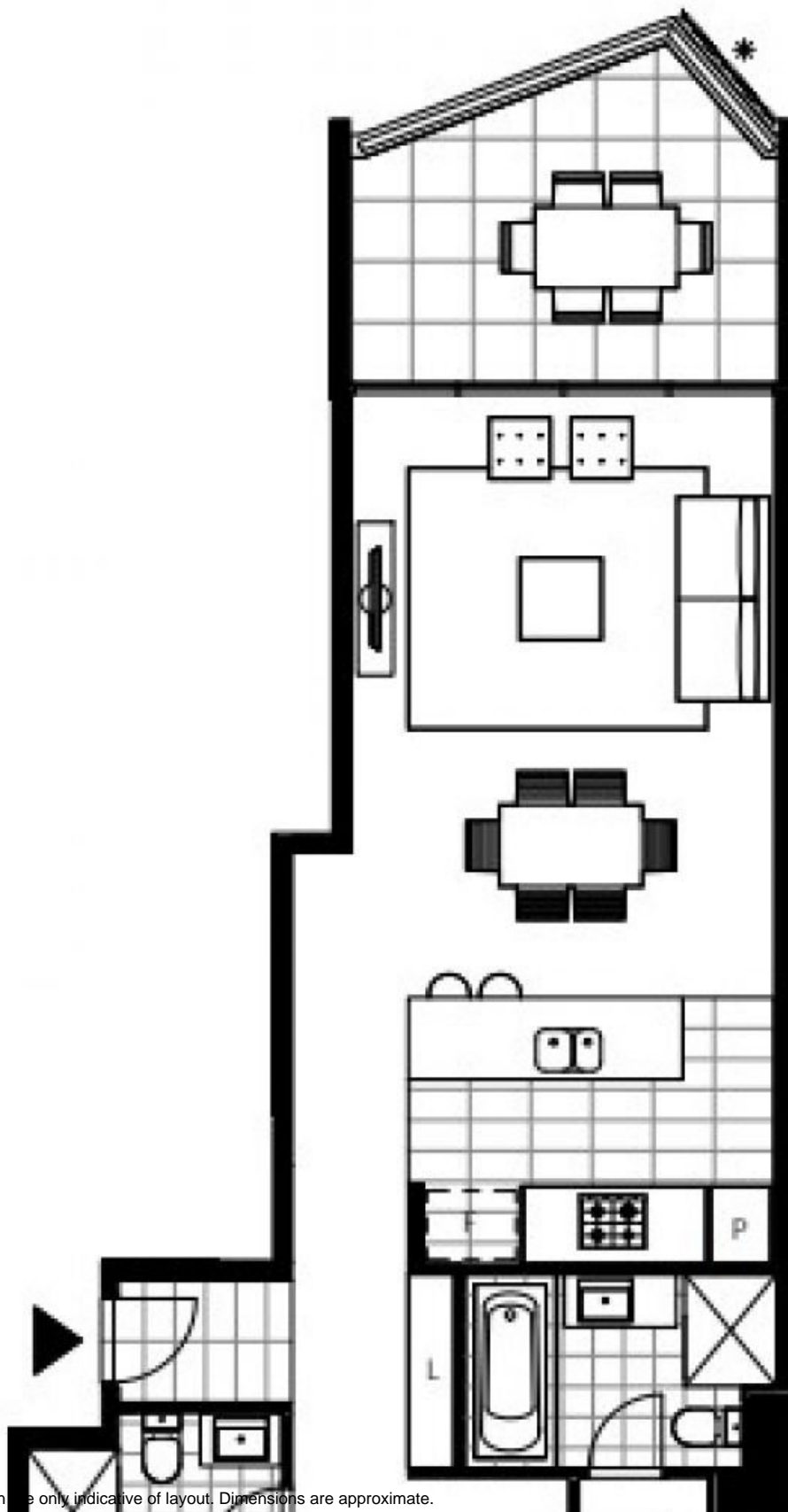
**Contact:** Naz Sabzpouri  
02 8588 8888  
0401 545 440

**Type:** Apartment

**Date Available:** 22/08/2024

**Bond:** \$4400

<https://www.resbymirvac.com>



Plans shown are only indicative of layout. Dimensions are approximate.

**Glebe, NSW**  
507/162 Ross Street