



Docklands, VIC
3008/103 South Wharf Drive

2 BED **1** BATH **1** CAR



Luxurious Sky-Home Living with Breathtaking River Views in Yarras Edge Precinct

Set in the tallest, newest and most prestigious building in the Yarras Edge village precinct, this Mirvac-built Voyager apartment is like a sumptuous sky-home. Promising a lifestyle of contemporary luxury, its sleek and stylish with floor-to-ceiling glass windows that showcase dazzling river views. Only the finest finishes and inclusions have been selected to appoint the generous light-filled interiors and seamless indoor/outdoor spaces.

Apartment Features:

- Open plan kitchen and vast living/dining flowing to terrace
- Stone bench tops, gas stainless steel appliances, dishwasher,
- Generous bedrooms with built-in robes

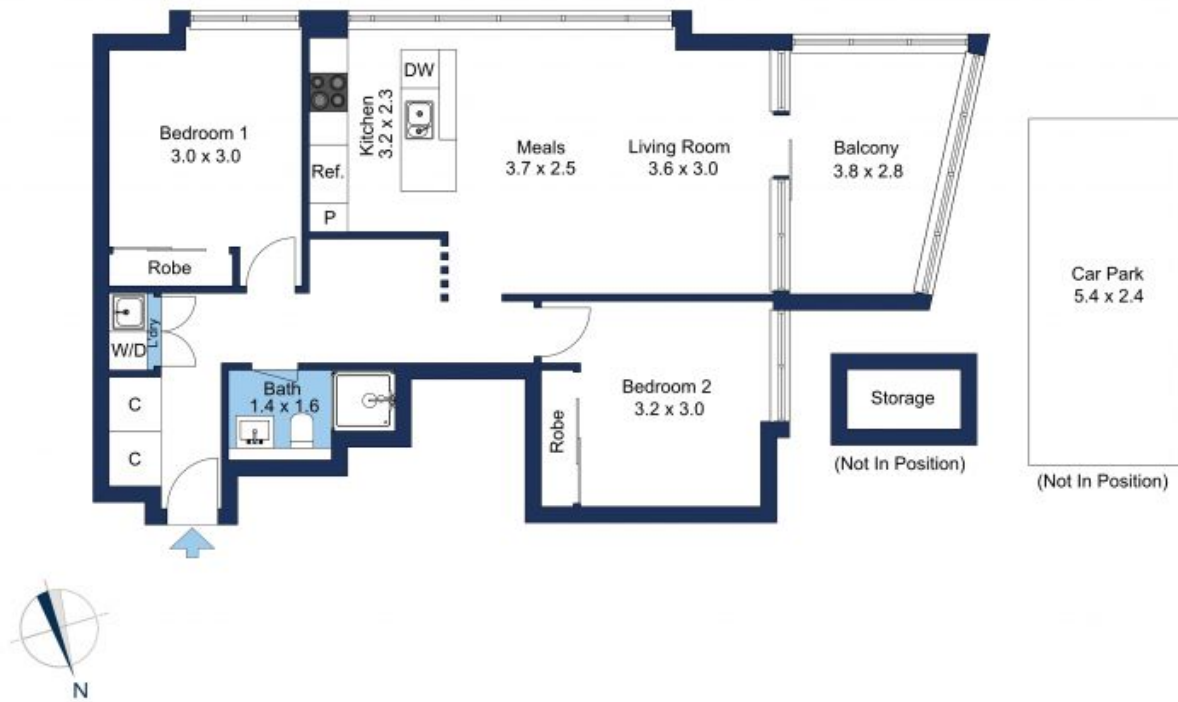
\$750 per week

View: Tue, 30 Jul 2024 @ 12:20 pm - 12:40 pm
Tue, 30 Jul 2024 @ 4:20 pm - 4:40 pm

Contact: Aleiasha Clark
03 9645 1199
0491 174 507

Type: Apartment

Date Available: 26/07/2024
<https://www.resbymirvac.com>



The floor plan is not to scale; measurements are indicative and in metres. Exterior elements are not in position. Plans should not be relied on. Interested parties should make and rely on their own enquiries.

Plans shown are only indicative of layout. Dimensions are approximate.

Docklands, VIC
3008/103 South Wharf Drive