



Glebe, NSW
107/6 Maxwell Road

3 BED **2** BATH **2** CAR 

Stunning Fully-Furnished, Park-Facing 3 Bedroom Apartment in Mirvac's Harold Park!

Welcome to Harold Park, Glebe's Secret Backyard.

In the charming enclave of Harold Park, you'll discover a picturesque parkside setting, just a leisurely stroll from Glebe Foreshore. Merely steps away, The Tramsheds retail precinct beckons, boasting delightful cafes, a boutique grocery store, renowned restaurants, and even a convenient medical centre. Plus, enjoy close proximity to the light rail, schools, and the city, all just a short distance away, ensuring convenience and connectivity at your fingertips.

This 135sqm furnished apartment offers:

\$1,900 per week | Furnished with 2 carspaces

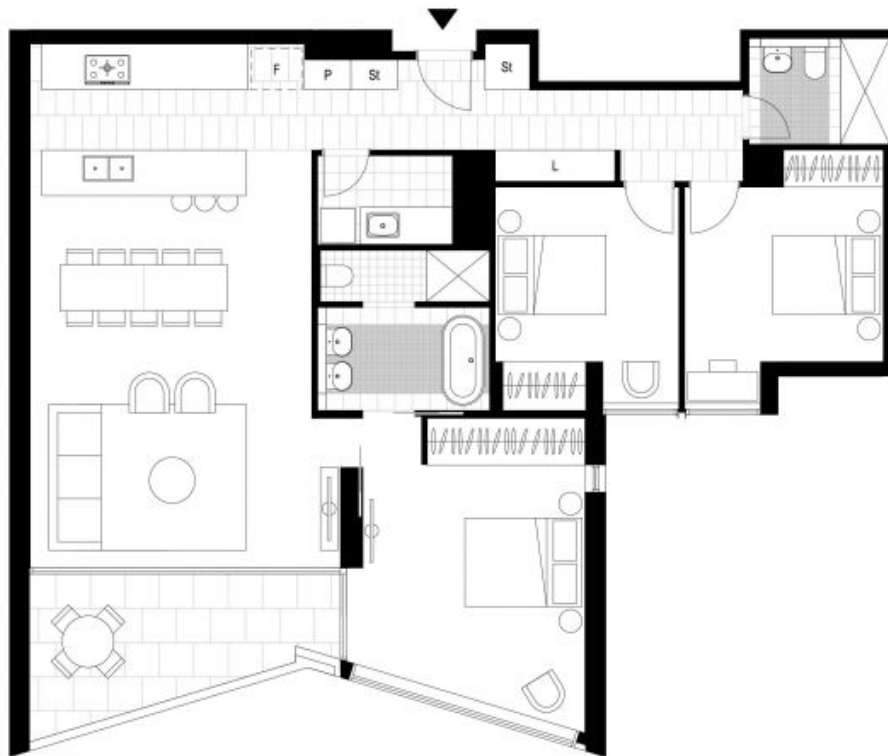
Contact: Naz Sabzpouri
02 8588 8888
0401 545 440

Type: Apartment

Date Available: 25/07/2024

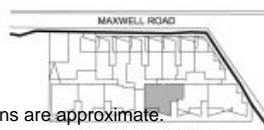
Bond: \$7600

<https://www.resbymirvac.com>



LEVEL 1

LOT No. 11 LOCATION PLAN



3 BEDROOM APARTMENT

Strata Area 135 m²
 Draft Areas subject to final survey, area includes balcony and/or terrace where applicable. It excludes parking and external storage areas.



The information contained herein is believed to be correct but is not guaranteed. The floor plans were prepared prior to completion. Floor plans are at an unabbreviated scale. Dimensions and areas are approximate. Plans do not show additional features such as such as hot water systems, service parts, interlocks and side and rear retaining walls. Purchaser agrees noted on floor plans are loaded on some lots only and are available only at time of sale. Changes to the apartments will undoubtedly be made during development, and may occur without notice in accordance with the provisions of the contract for sale. The furniture and fittings depicted are not included with any sale and furnishings should not be taken to indicate the final position of power points, TV connection points and the like. Prospective purchasers must refer to the contract for sale for the list of inclusions. All graphics, including the layout, setbacks, siting, sources and sunshading devices, are illustrative only. The location plan provides an aerial view of the apartment building. Apartments on the ground level to level 2 of the building sit below the level of Maxwell Road. Quirks necessary for services are not depicted. The public park areas will not be developed as an attachment of the apartments. The design, landscaping and establishment of the public park areas, and the timing of their delivery, including access to them, is entirely within the control of the City of Sydney Council and approved at their sole discretion. Purchasers must rely on their own enquiries in relation to all matters.

12.11.2014 [A]

Plans shown are only indicative of layout. Dimensions are approximate.

Glebe, NSW
 107/6 Maxwell Road