



Sydney Olympic Park, NSW

20707/2 Figtree Drive

2
BED

2
BATH

1
CAR



Contemporary 2 Bedroom Apartment with Parking in 'Pavilions' Sydney Olympic Park

Welcome to Pavilions in Sydney Olympic Park

Discover the unparalleled allure of Sydney Olympic Park, where Pavilions by Mirvac offers a lifestyle of convenience and luxury. Nestled amidst vibrant parklands, trendy cafes, and world-class sporting facilities, residents enjoy proximity to an array of amenities. As a resident of Pavilions by Mirvac, you'll have exclusive access to a gym, co-working space, and a dedicated children's play area, ensuring every aspect of your lifestyle is catered to with style and sophistication.

This 85sqm, 7th floor apartment features:

\$850 per week

Contact:

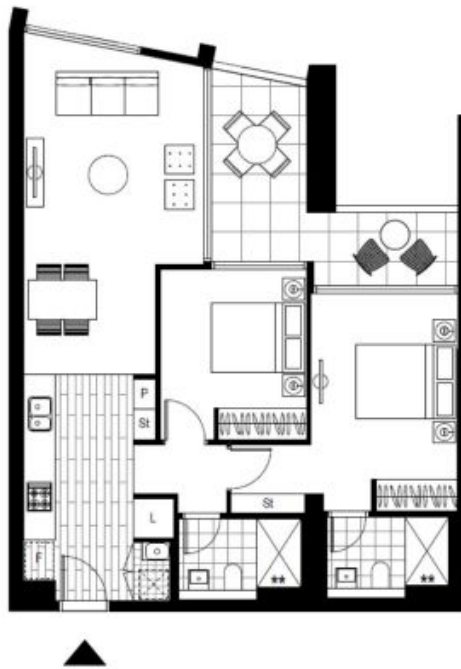
Eunice Teo
02 8588 8888
0481 440 088

Type: Apartment

Date Available: 09/08/2024

Bond: \$3400

<https://www.resbymirvac.com>



Please note that this floor plan is a guide only.
The information contained herein is not guaranteed.
Dimensions are approximate.
Prospective renters must rely on their own enquiries.

20707/2 Figtree Dr, Sydney Olympic Park



Plans shown are only indicative of layout. Dimensions are approximate.

Sydney Olympic Park, NSW
20707/2 Figtree Drive