



## Docklands, VIC

1106/50 Lorimer Street

**2** BED **1** BATH **1** CAR 

### Dazzling sunset vistas over Yarra's Edge marina

Welcome to Yarra's Edge, 'Tower 1',

A delightful marina side residence only moments away from an array of cafes, restaurants, parks, Yarra's Edge promenade and IGA supermarket. Residents may also enjoy access to Mirvac's state of the art Rek Dek facilities at the base of Tower 1; comprising of a 25M lap pool, spa, sauna and gymnasium.

This 2Bedroom, 1Bathroom apartment features;

- Balcony overlooking Yarra's Edge marina
- Open plan living and dining experience flowing to balcony
- Two spacious bedrooms with BIR's
- Sleek galley style kitchen with integrated dishwasher

### COMING SOON

**Contact:** Aleiasha Clark  
03 9645 1199  
0491 174 507

**Type:** Apartment

**Date Available:** 15/08/2024

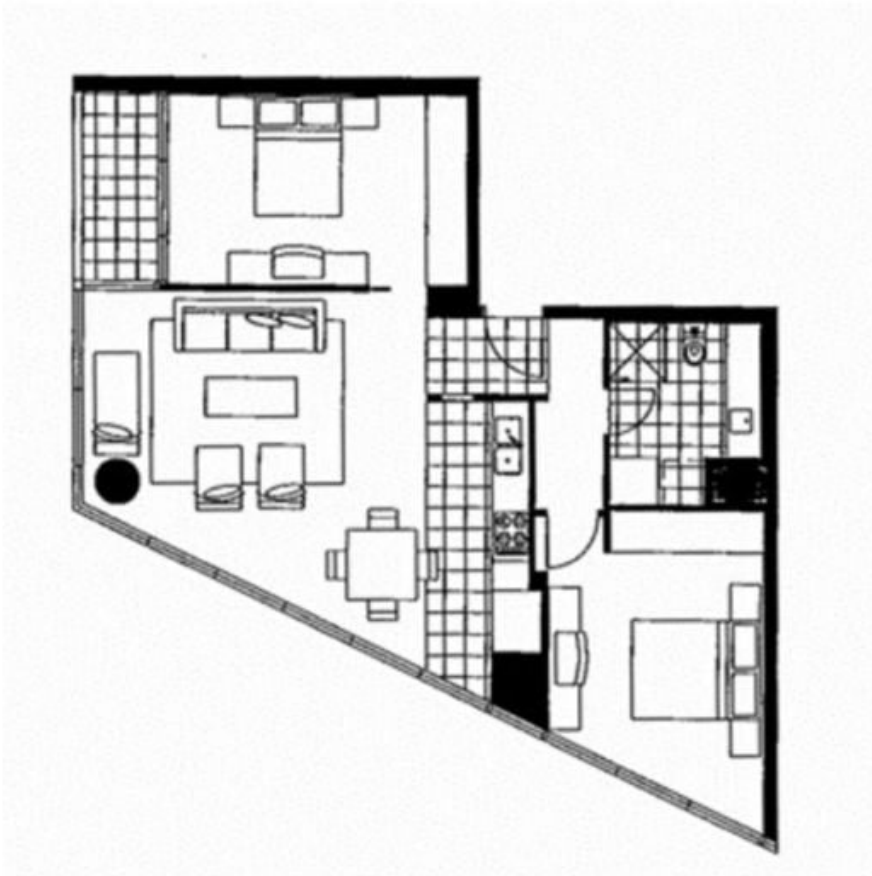
**<https://www.resbymirvac.com>**



2

1

1



## LEVEL 11

Please note that this floor plan is a guide only. The information contained herein is not guaranteed. Dimensions are approximate. Prospective purchasers must rely on their own enquiries.



real estate  
services  
by mirvac

**1106/50 Lorimer St**

**DOCKLANDS**

Plans shown are only indicative of layout. Dimensions are approximate.

**Docklands, VIC**  
1106/50 Lorimer Street