



Glebe, NSW
3806/21 Scotsman Street

1 BED **1** BATH



Sunny Top Floor 1-Bedroom Apartment in Mirvac's Harold Park!

Welcome to Harold Park, Glebe's Secret Backyard.

Here in Harold Park you will find yourself in an idyllic parkside location, with only a short walk to Glebe Foreshore. Just meters away, The Tramsheds retail precinct resides featuring cafes, a grocery store, restaurants and a medical centre.

This level 8 apartment features:

- Spacious bedroom with built-in wardrobes
- Functional living and dining area, flowing onto North facing balcony
- Modern kitchen with stone benchtop and built-in Miele appliances
- Functional bathroom with plenty of vanity storage

\$690 per week - Top floor!

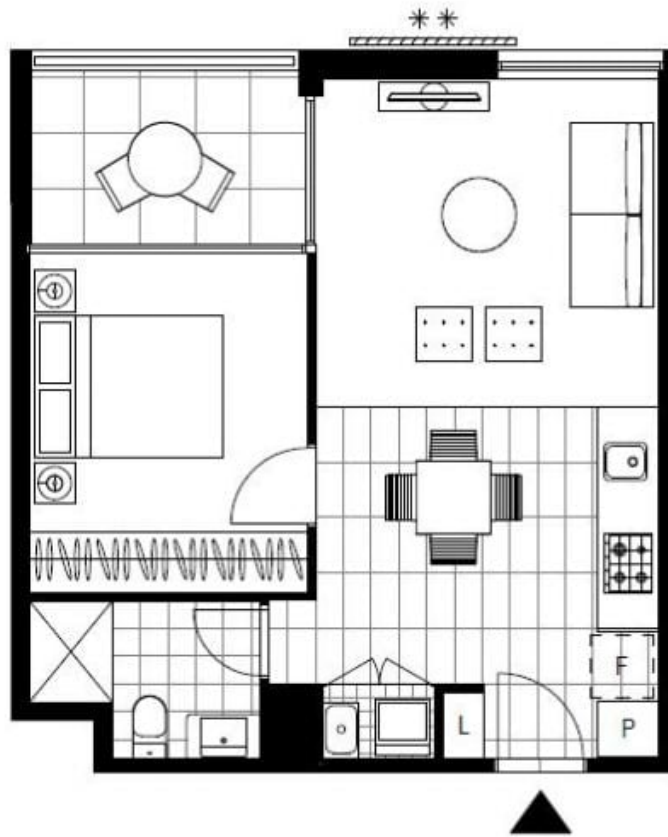
Contact: Naz Sabzpour
02 8588 8888
0401 545 440

Type: Apartment

Date Available: 26/07/2024

Bond: \$2760

<https://www.resbymirvac.com>



Plans shown are only indicative of layout. Dimensions are approximate.

Glebe, NSW
3806/21 Scotsman Street