



Sydney Olympic Park, NSW
21805/2 Figtree Drive

2 BED **2** BATH **1** CAR



Level 18 North Facing 2 Bedroom Apartment in Pavilions By Mirvac

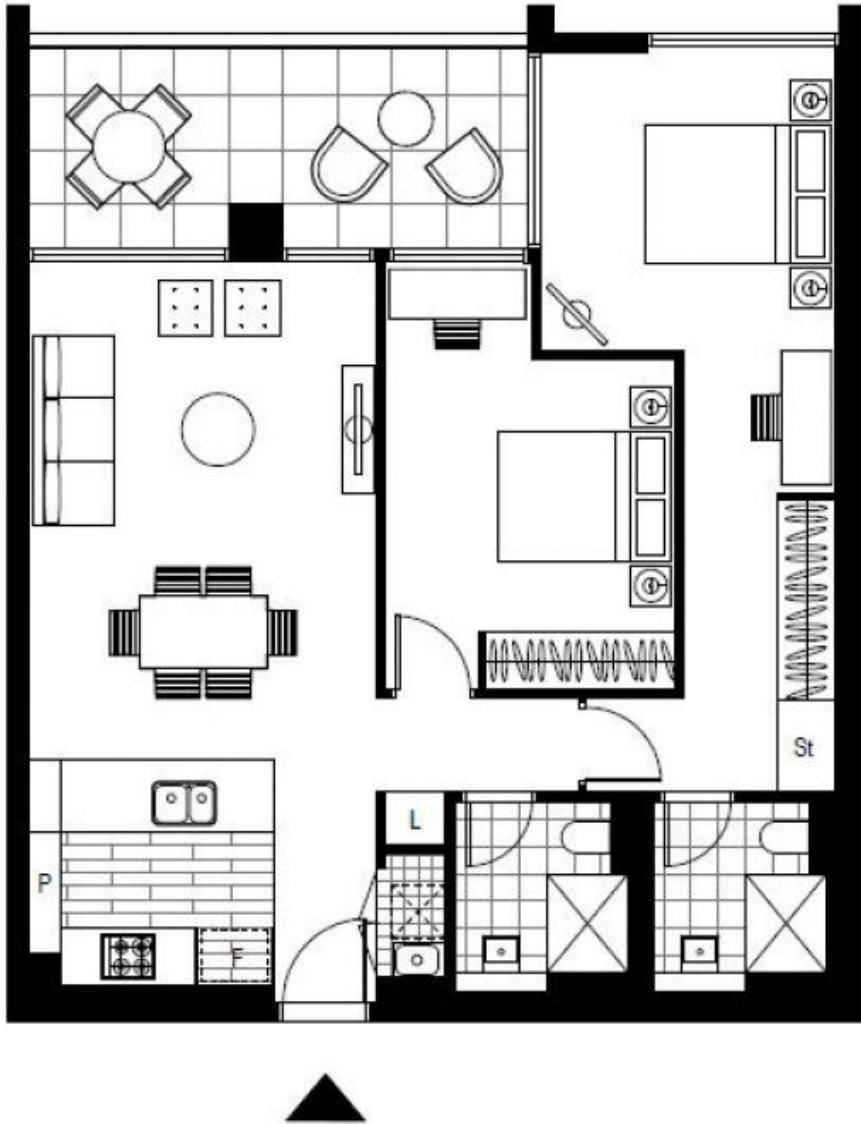
This 90sqm, 2-Bedroom Apartment features:

- Spacious bedrooms with generous built-in wardrobes
- Open-plan living and dining area, leading to the balcony
- Contemporary kitchen with stone benchtops and Smeg appliances
- Sleek bathrooms with generous vanity storage
- North facing sunny balcony, perfect for entertaining
- Internal laundry with dryer included
- Secure car space and storage cage included
- Ducted A/C, video intercom and NBN connectivity
- Resident access to gym, community room and open BBQ area
- 550m to the Olympic Park Train Station, 650m to the Bicentennial Park, 700m to ANZ Stadium

Buyers Guide \$1,050,000

Contact: Emma Symonds
02 8588 8888
0412 660 011
Dewen Li
02 8588 8888
0422 776 892

Type: Apartment
Land: 90Square Metres
<https://www.resbymirvac.com>



Plans shown are only indicative of layout. Dimensions are approximate.

Sydney Olympic Park, NSW
21805/2 Figtree Drive