



**Glebe, NSW**  
309/172 Ross Street

**1**  
BED

**1**  
BATH



### Private Garden-Facing 1-Bedroom Apartment in Harold Park

Welcome to Harold Park, Glebe's Secret Backyard.

Here in Harold Park you will find yourself in an idyllic parkside location, with only a short walk to Glebe Foreshore. Just meters away, The Tramsheds retail precinct resides featuring cafes, a grocery store, restaurants and a medical centre.

This spacious 63sqm apartment features:

- Full size kitchen with stone island benchtop and built-in Miele appliances
- Large bedroom with floor-to-ceiling built-in wardrobe
- Open-plan living and dining area, flowing onto garden facing balcony
- Sleek bathroom with plenty of vanity storage

**\$800 per week**

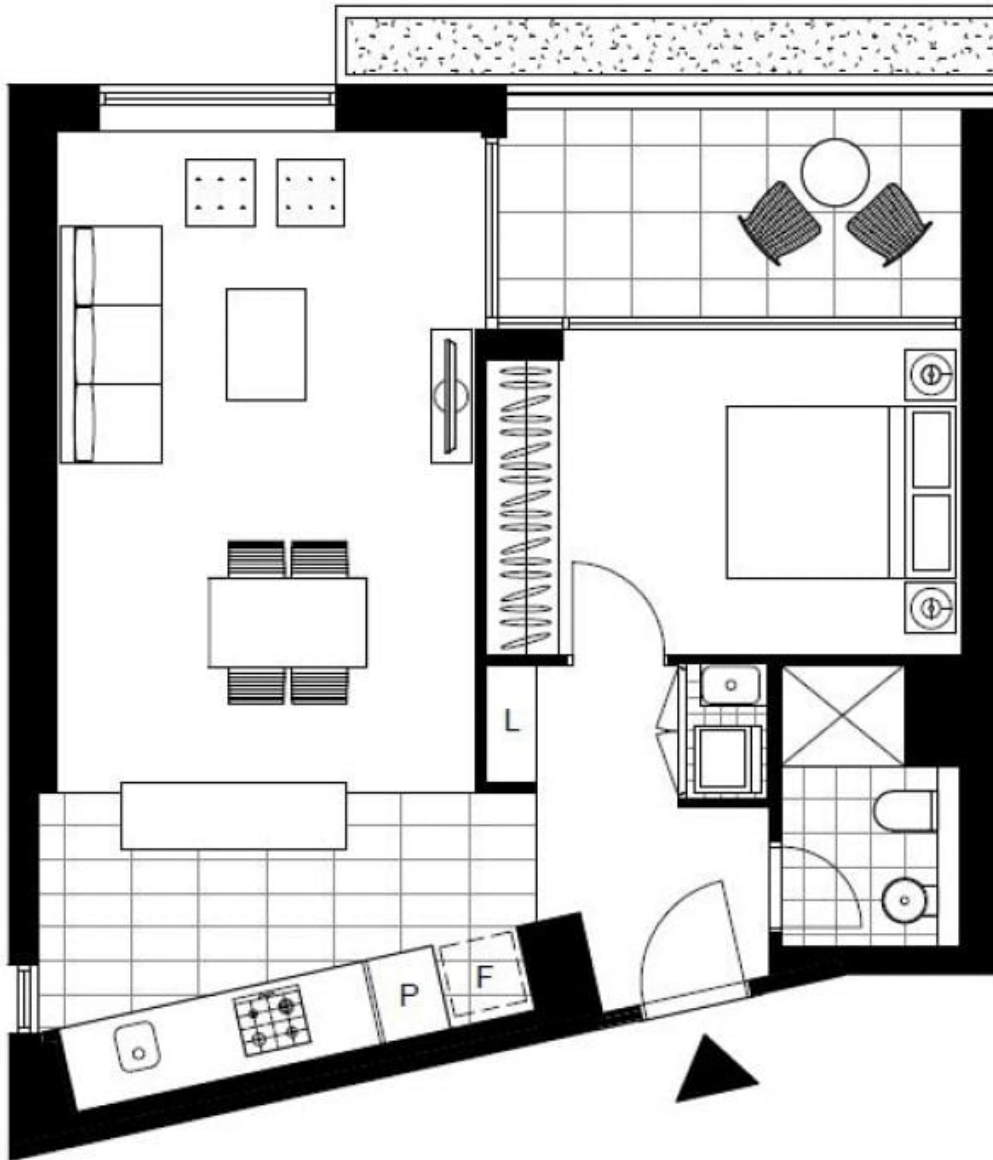
**Contact:** Naz Sabzpouri  
02 8588 8888  
0401 545 440

**Type:** Apartment

**Date Available:** 10/07/2024

**Bond:** \$3200

**<https://www.resbymirvac.com>**



Plans shown are only indicative of layout. Dimensions are approximate.

**Glebe, NSW**  
309/172 Ross Street