



Willoughby, NSW

506/24 Artarmon Road

1 1 1
BED BATH CAR



Brand New 1 Bedroom Plus Separate Study Apartment in NINE by Mirvac

Welcome to NINE by Mirvac

Nestled within the picturesque Lower North Shore, just 6km from Sydney's vibrant CBD and a mere 3.2km from the heart of North Sydney, resides the highly anticipated NINE by Mirvac. Embracing a lifestyle at NINE offers seamless connections, with the convenience of Artarmon Train Station (only 1.7km away), the bustling Chatswood CBD (merely 3.9km away), and easy access to the M1 & M2 road networks. This haven is also surrounded by local boutiques, esteemed schools, verdant parklands, a state-of-the-art leisure centre, and an array of delectable dining options.

This 5th floor, 1-bedroom + separate study apartment features:

\$990 per week | Parking Included!

Contact:

Georgia Glynn

02 8588 8888

0481 388 777

Christine Howison

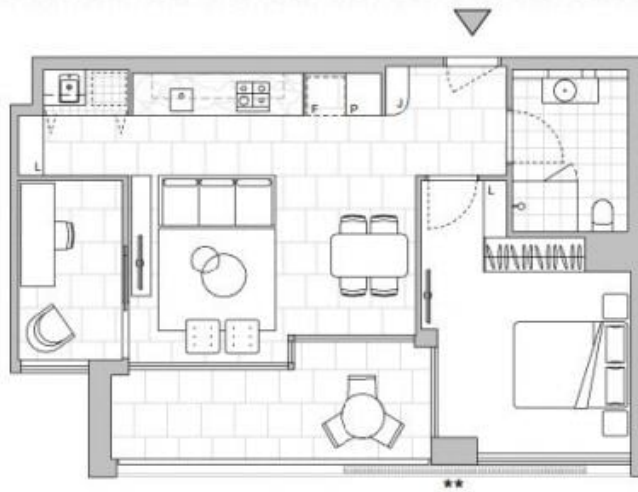
02 8588 8888

0459 222 085

Type: Apartment

Date Available: 28/06/2024

<https://www.resbymirvac.com>



Plans shown are only indicative of layout. Dimensions are approximate.

Willoughby, NSW
506/24 Artarmon Road