



Glebe, NSW

508/119 Ross Street

1
BED

1
BATH



Park Facing 1 Bedroom Apartment in Harold Park, Glebe

Welcome to Harold Park, Glebe's Secret Backyard.

In the charming enclave of Harold Park, you'll discover a picturesque parkside setting, just a leisurely stroll from Glebe Foreshore. Merely steps away, The Tramsheds retail precinct beckons, boasting delightful cafes, a boutique grocery store, renowned restaurants, and even a convenient medical centre. Plus, enjoy close proximity to the light rail, schools, and the city, all just a short distance away, ensuring convenience and connectivity at your fingertips.

This 5th floor apartment features:

Deposit Taken!

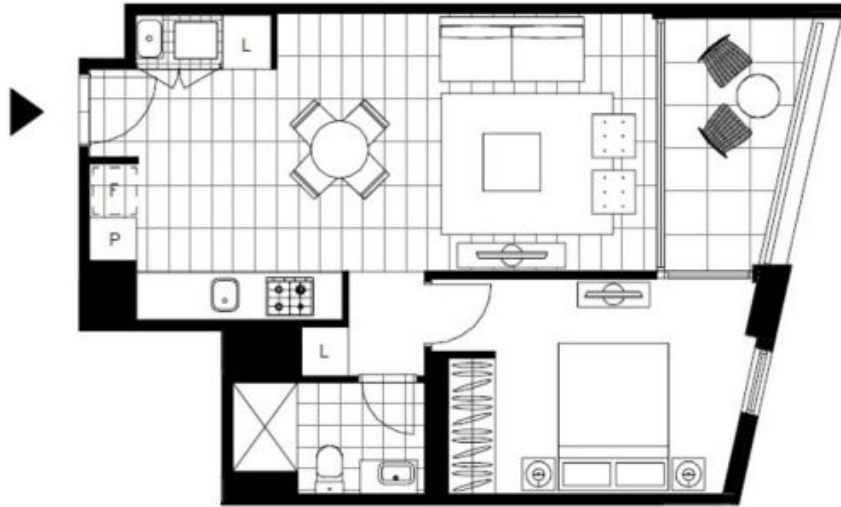
Contact: Naz Sabzpour
02 8588 8888
0401 545 440

Type: Apartment

Date Available: 15/07/2024

Bond: \$3040

<https://www.resbymirvac.com>



Please note that this floor plan is a guide only
The information contained herein is not guaranteed.
Dimensions are approximate.
Prospective renters must rely on their own enquiries.

508/119 Ross St, Glebe

  
1 1 0

 real estate
services
by mirvac

Plans shown are only indicative of layout. Dimensions are approximate.

Glebe, NSW
508/119 Ross Street