



Glebe, NSW
103/159 Ross Street

2 BED
2 BATH
1 CAR



Sunny, Park-Side 2 Bedroom Apartment with Carspace in Harold Park by Mirvac

Welcome to Harold Park, Glebe's Secret Backyard.

In the charming enclave of Harold Park, you'll discover a picturesque parkside setting, just a leisurely stroll from Glebe Foreshore. Merely steps away, The Tramsheds retail precinct beckons, boasting delightful cafes, a boutique grocery store, renowned restaurants, and even a convenient medical centre. Plus, enjoy close proximity to the light rail, schools, and the city, all just a short distance away, ensuring convenience and connectivity at your fingertips.

This 2-bedroom ground floor apartment features:

\$1,200 per week | Park Facing!

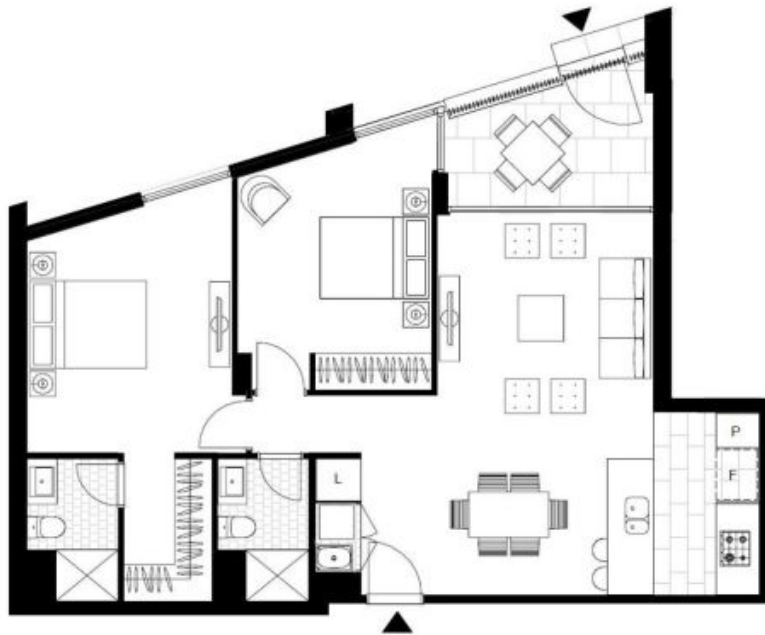
Contact: Naz Sabzpour
02 8588 8888
0401 545 440

Type: Apartment

Date Available: 20/07/2024

Bond: \$4800

<https://www.resbymirvac.com>



Please note that this floor plan is a guide only
The information contained herein is not guaranteed.
Dimensions are approximate.
Prospective renters must rely on their own enquiries.

103/159 Ross St, Glebe



Plans shown are only indicative of layout. Dimensions are approximate.

Glebe, NSW
103/159 Ross Street