



Docklands, VIC

807/60 Lorimer Street

2 **1** **1** **RES**
BED BATH CAR

Prestigious Riverside Living at Yarra's Edge

Welcome to Yarra's Edge, Docklands' most prestigious riverside community.

At Yarra's Edge, you'll enjoy a prime waterfront location just moments away from a variety of cafes, restaurants, parks, the picturesque Yarra's Edge promenade, and an IGA supermarket. Ideally situated between the river, city, and bay, this peaceful community features lush parklands and playgrounds, scenic waterfront boardwalks, health and wellness centres, as well as retail, dining, and Marina YE for a vibrant, well-rounded lifestyle.

Apartment Features:

- Spectacular views of Melbourne's Port Phillip Bay and Yarra River

COMING SOON

Contact: Aleiasha Clark
03 9645 1199
0491 174 507

Type: Apartment

Date Available: 01/07/2024

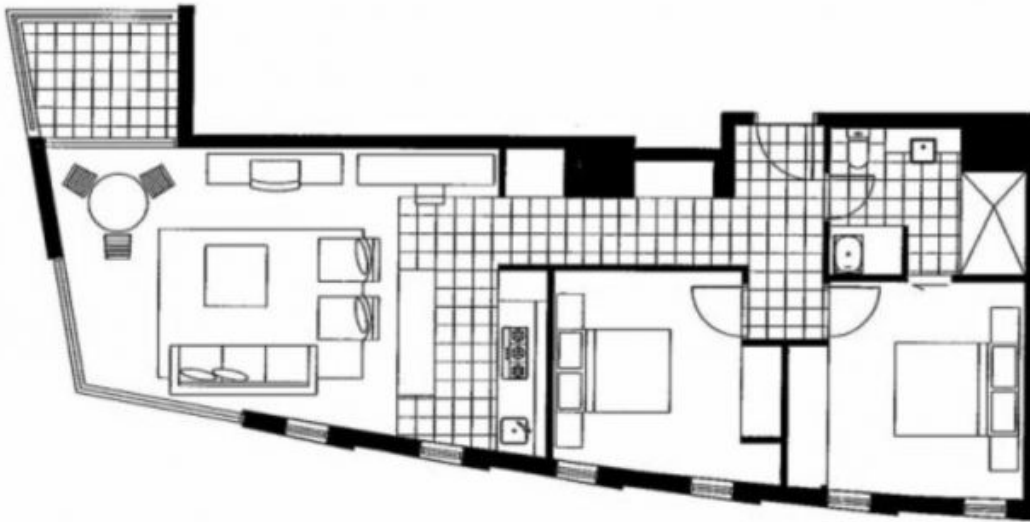
<https://www.resbymirvac.com>



2

1

1



LEVEL 8

Please note that this floor plan is a guide only.
The information contained herein is not
guaranteed. Dimensions are approximate.
Prospective purchasers must rely on their own
enquiries.



807/60 Lorimer St

DOCKLANDS

Plans shown are only indicative of layout. Dimensions are approximate.

Docklands, VIC
807/60 Lorimer Street