



Docklands, VIC
3704/103 South Wharf Drive

2 BED **1** BATH **1** CAR



A new standard in cosmopolitan lifestyle living?

Placed in the sparkling 'Voyager' building in the waterfront Mirvac-developed Yarra's Edge precinct, this apartment sets a new standard in cosmopolitan lifestyle living.

Step out and stroll to manicured Wharfs Landing Park and keep in shape by walking along the waterfront or taking advantage of the complementary Wharf Club membership. When it's time to eat, drink or socialise, choose from a wide selection of nearby eateries. With the CBD to the northeast, Southbank to the east and Port Melbourne to the south, it's perfectly central to all the excitement of the city and the serenity of Port Phillip Bay.

Apartment Features:

- Open plan kitchen and roomy living/dining flows to balcony

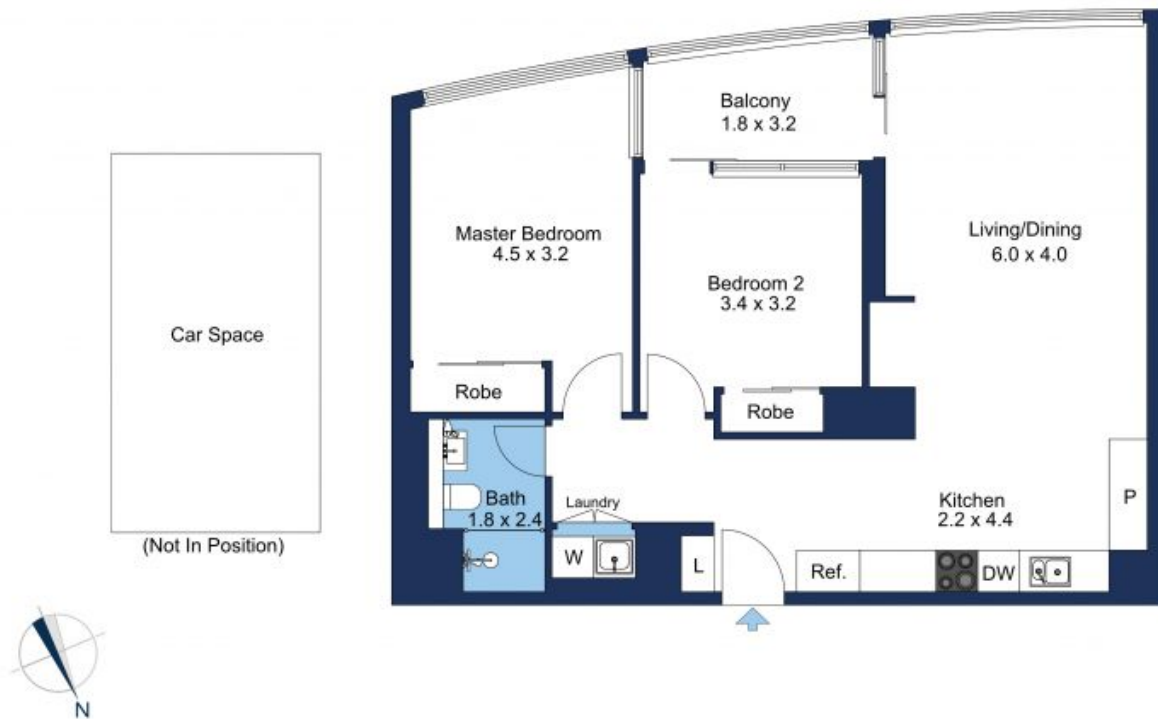
COMING SOON

Contact: Aleiasha Clark
03 9645 1199
0491 174 507

Type: Apartment

Date Available: 16/07/2024

<https://www.resbymirvac.com>



The floor plan is not to scale; measurements are indicative and in metres. Exterior elements are not in position. Plans should not be relied on. Interested parties should make and rely on their own enquiries.

Plans shown are only indicative of layout. Dimensions are approximate.

Docklands, VIC
3704/103 South Wharf Drive