



Glebe, NSW
108/170 Ross Street

1 BED **1** BATH

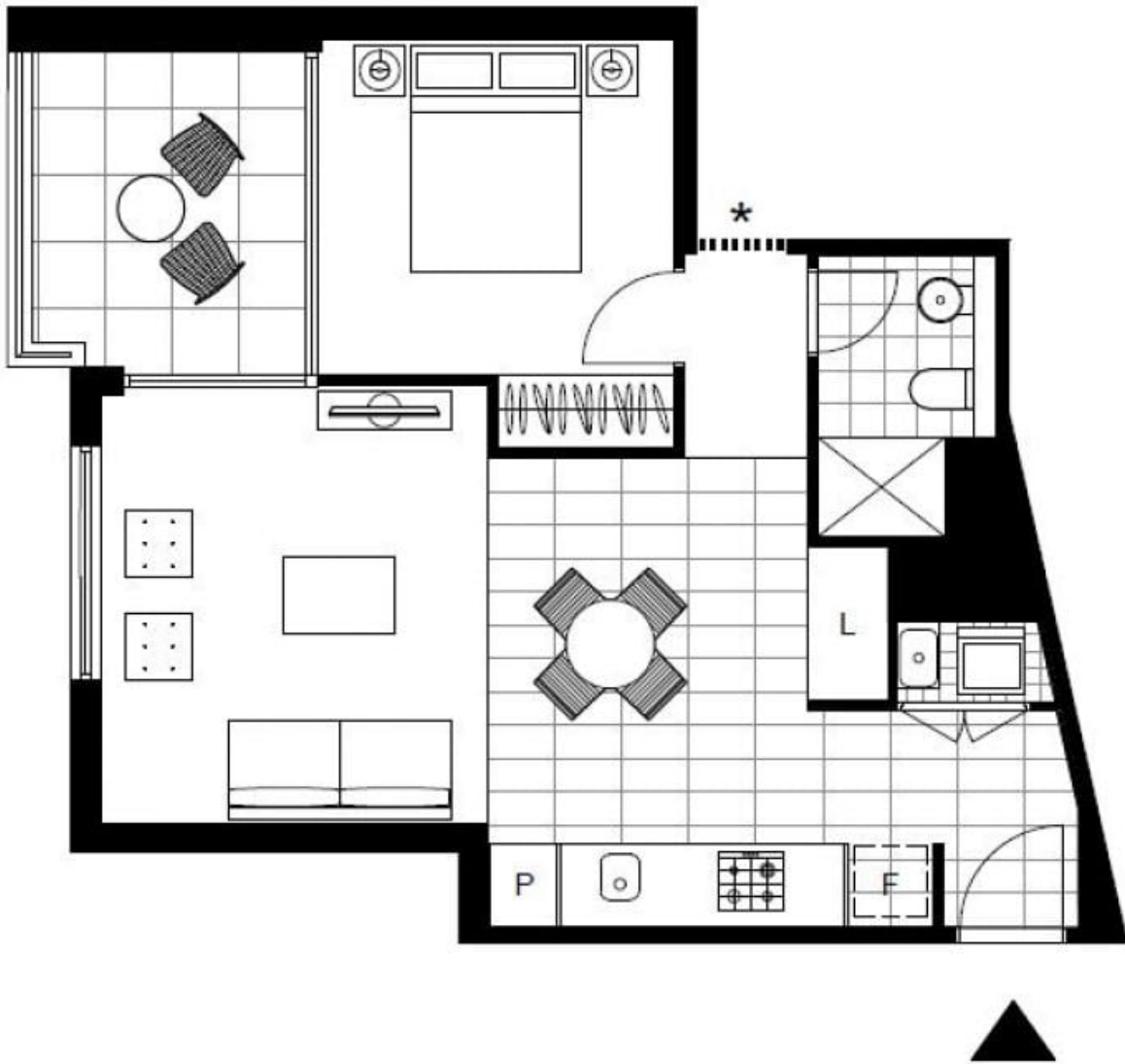


Modern Ground-Floor 1 Bedroom Apartment in Mirvac's Harold Park
Welcome to Harold Park, Glebe's Secret Backyard.

In the charming enclave of Harold Park, you'll discover a picturesque parkside setting, just a leisurely stroll from Glebe Foreshore. Merely steps away, The Tramsheds retail precinct beckons, boasting delightful cafes, a boutique grocery store, renowned restaurants, and even a convenient medical centre. Plus, enjoy close proximity to the light rail, schools, and the city, all just a short distance away, ensuring convenience and connectivity at your fingertips.

This 1-bedroom ground floor apartment features:

\$760 per week
Contact: Naz Sabzpouri
02 8588 8888
0401 545 440
Type: Apartment
Date Available: 05/07/2024
<https://www.resbymirvac.com>



Plans shown are only indicative of layout. Dimensions are approximate.

Glebe, NSW
108/170 Ross Street