



**Zetland, NSW**  
406/28 Ebsworth Street

**1** BED **1** BATH



**Innovative Design: One-Bedroom + Study in Green Square**

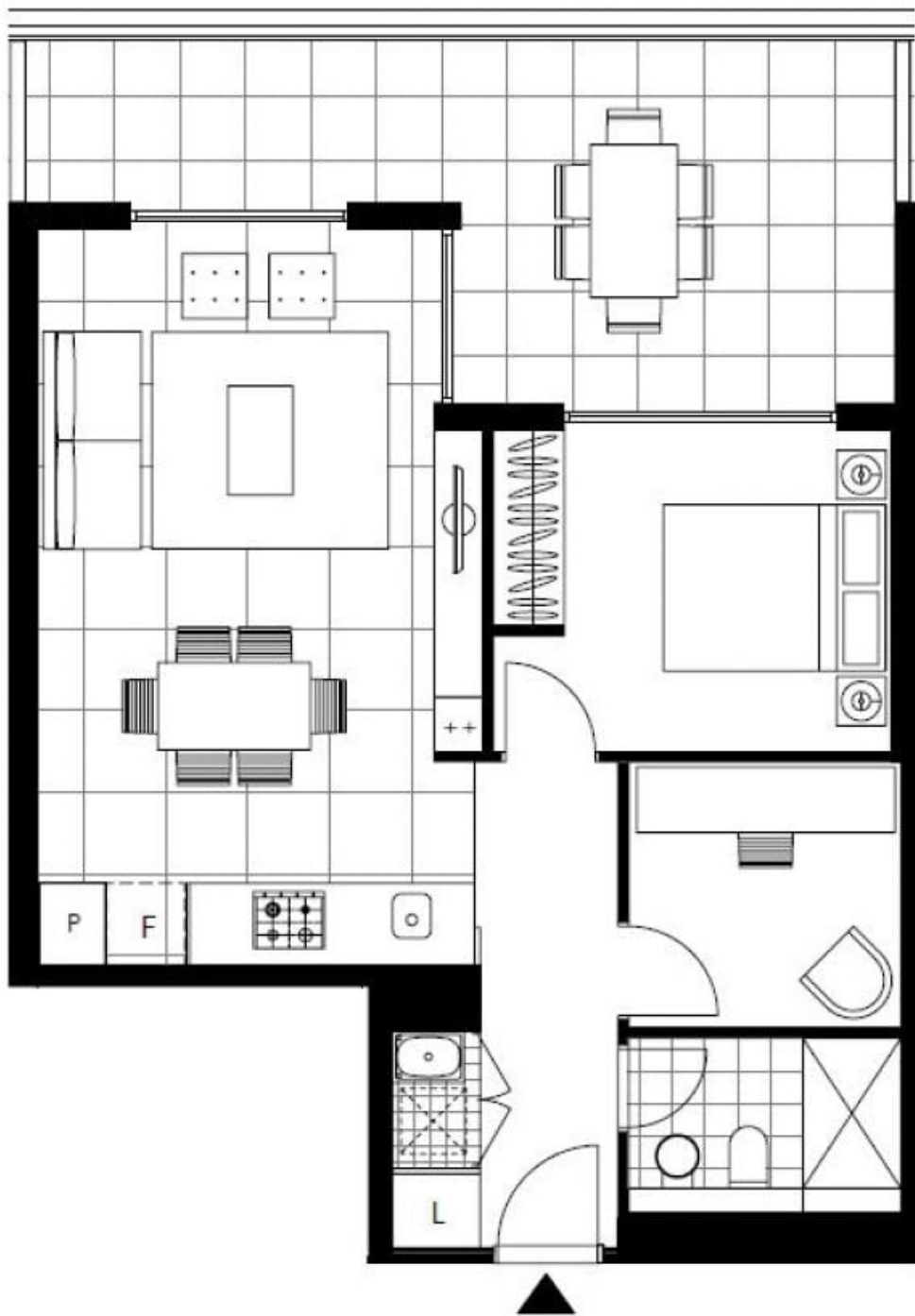
Discover the ultimate in modern living with this sophisticated one-bedroom plus study unit in Mirvac's renowned Green Square development. Perfectly positioned within Sydney's vibrant new precinct, this unit offers a seamless blend of luxury and convenience. Featuring refined interiors and sustainable features, this apartment is ideal for urban professionals or couples. Enjoy proximity to Green Square Station, lush parklands, and a dynamic retail hub, making everyday living effortless.

**Buyers Guide \$870,000**

**Contact:** Emma Symonds  
02 8588 8888  
0412 660 011

**Type:** Apartment  
**Land:** 76Square Metres  
<https://www.resbymirvac.com>

- ? Bright, open-plan living and dining areas with natural light.
- ? Spacious bedroom with plush carpet and built-in wardrobe.
- ? Fully enclosed study room, ideal for a home office or guest space.
- ? Modern kitchen featuring sleek stone benchtops and finishes.



LEVEL 4

Plans shown are only indicative of layout. Dimensions are approximate.

**Zetland, NSW**  
406/28 Ebsworth Street