



## Sydney Olympic Park, NSW

20211/2 Figtree Drive

**2** BED **2** BATH **1** CAR



### Contemporary 2 Bedroom Apartment with Parking in Thriving Sydney Olympic Park

Welcome to Pavilions in Sydney Olympic Park

Discover the unparalleled allure of Sydney Olympic Park, where Pavilions by Mirvac offers a lifestyle of convenience and luxury. Nestled amidst vibrant parklands, trendy cafes, and world-class sporting facilities, residents enjoy proximity to an array of amenities. As a resident of Pavilions by Mirvac, you'll have exclusive access to a gym, co-working space, and a dedicated children's play area, ensuring every aspect of your lifestyle is catered to with style and sophistication.

This 89sqm, 2 bedroom apartment features:

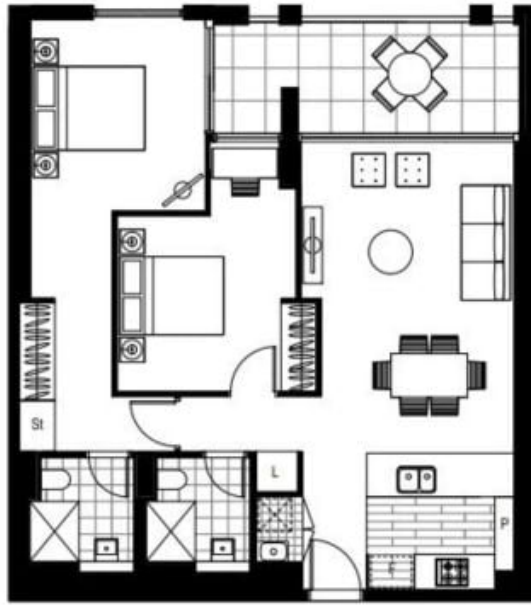
**\$850 per week | Parking Included!**

**Contact:** Georgia Glynn  
02 8588 8888  
0481 388 777

**Type:** Apartment

**Date Available:** 26/06/2024

**<https://www.resbymirvac.com>**



Please note that this floor plan is a guide only.  
The information contained herein is not guaranteed.  
Dimensions are approximate.  
Prospective renters must rely on their own enquiries.

20211/2 Figtree Dr, Sydney Olympic Park

    
2 2 1

 real estate  
services  
by mirvac

Plans shown are only indicative of layout. Dimensions are approximate.

**Sydney Olympic Park, NSW**  
20211/2 Figtree Drive