



Zetland, NSW
905/28 Ebsworth Street

2 BED **2** BATH **1** CAR



Sunny & Oversized 2 Bedroom Apartment with Parking in Green Square, Zetland

Welcome to Green Square, where city meets community living.

Situated just moments from charming cafes, convenient public transportation including Green Square station, and exclusive boutique shops, 'Ebsworth' offers unparalleled accessibility. Residents will delight in the array of acclaimed amenities nearby, including the state-of-the-art Gunyama Aquatic and Recreation Centre and the Green Square Library.

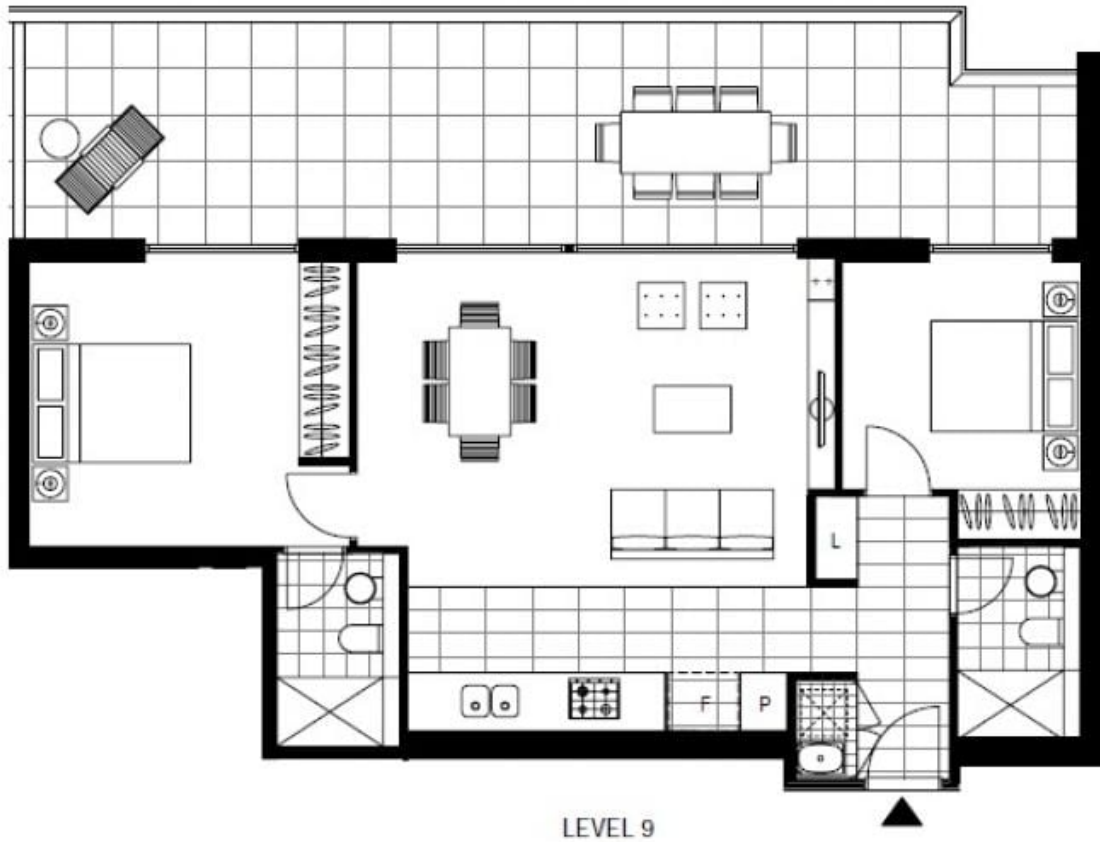
This 115sqm, 9th floor apartment features:

- Spacious bedrooms with generous built-in wardrobes
- Open-plan living and dining area, great for entertaining

\$1350 per week

Contact: Kevin Tam
02 8588 8888
0481 735 222

Type: Apartment
Date Available: 05/07/2024
<https://www.resbymirvac.com>



LEVEL 9

Plans shown are only indicative of layout. Dimensions are approximate.

Zetland, NSW
905/28 Ebsworth Street