



RES real estate services by mirvac



Glebe, NSW

1308/1 Scotsman Street

2 BED 2 BATH 1 CAR RES

Elegant Two-Bedroom in Maestro Building, Harold Park

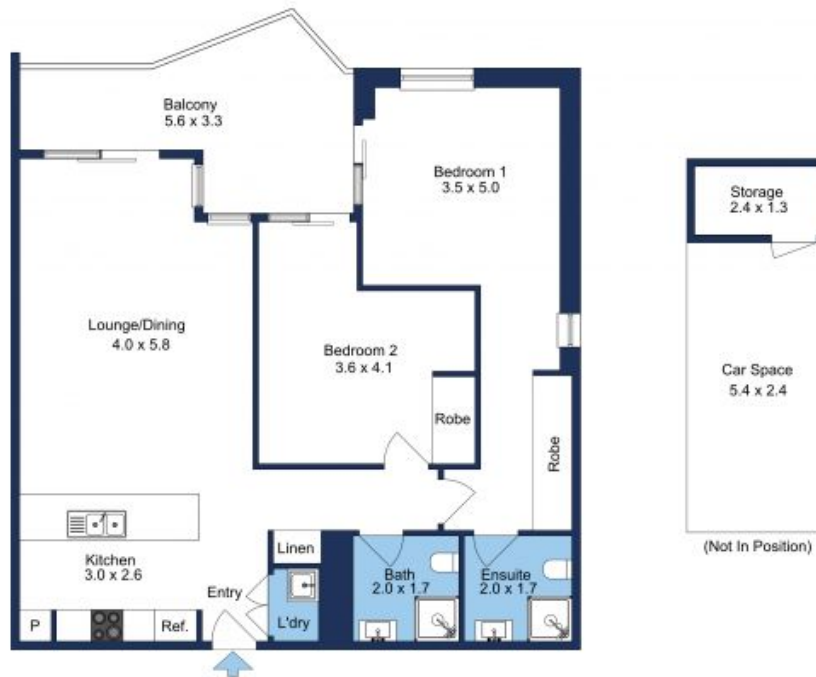
Experience contemporary living at its finest in this exquisite two-bedroom apartment with 96sqm of internal living in the Maestro building, Harold Park. Perfectly situated just 2.5 km from Sydney's CBD, this home offers unparalleled access to the city's vibrant lifestyle. Boasting refined interiors, sustainable features, and exclusive amenities, this north-east facing unit offers stunning views oriented towards the internal gardens. Proximity to public transport, expansive parklands, and the bustling Tramsheds retail precinct enhances its appeal for modern urban dwellers.

- ? Bright, open-plan living and dining areas with abundant natural light.
- ? Side-by-side bedrooms for convenience and easy access.
- ? Gourmet kitchen with sleek reconstituted stone benchtops.
- ? Generously sized bedrooms with plush carpet and built-in robes.

Buyers Guide \$1,500,000

Contact: Emma Symonds
02 8588 8888
0412 660 011

Type: Apartment
Land: 112Square Metres
<https://www.resbymirvac.com>



Internal Area	96 sqm
External Area	16 sqm
Total Area	112 sqm

The floor plan is not to scale; measurements are indicative and in metres. Exterior elements are not in position. Plans should not be relied on. Interested parties should make and rely on their own enquiries.

Plans shown are only indicative of layout. Dimensions are approximate.

Glebe, NSW
1308/1 Scotsman Street