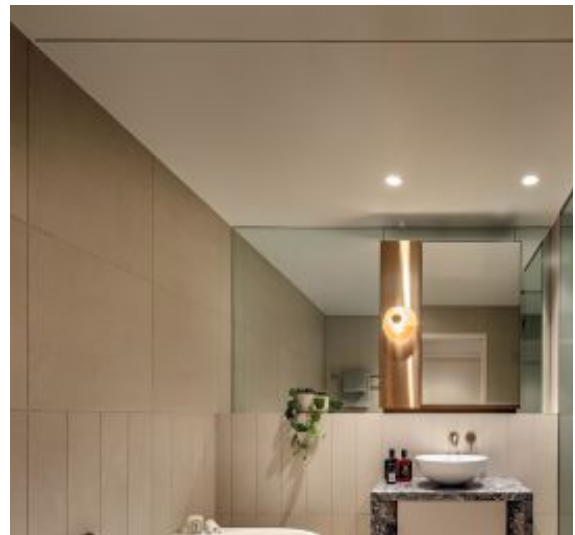




Disclaimer: Images are of the onsite display apartment and are indicative only.



Willoughby, NSW
211/17 Richmond Road

2 BED **2** BATH **1** CAR



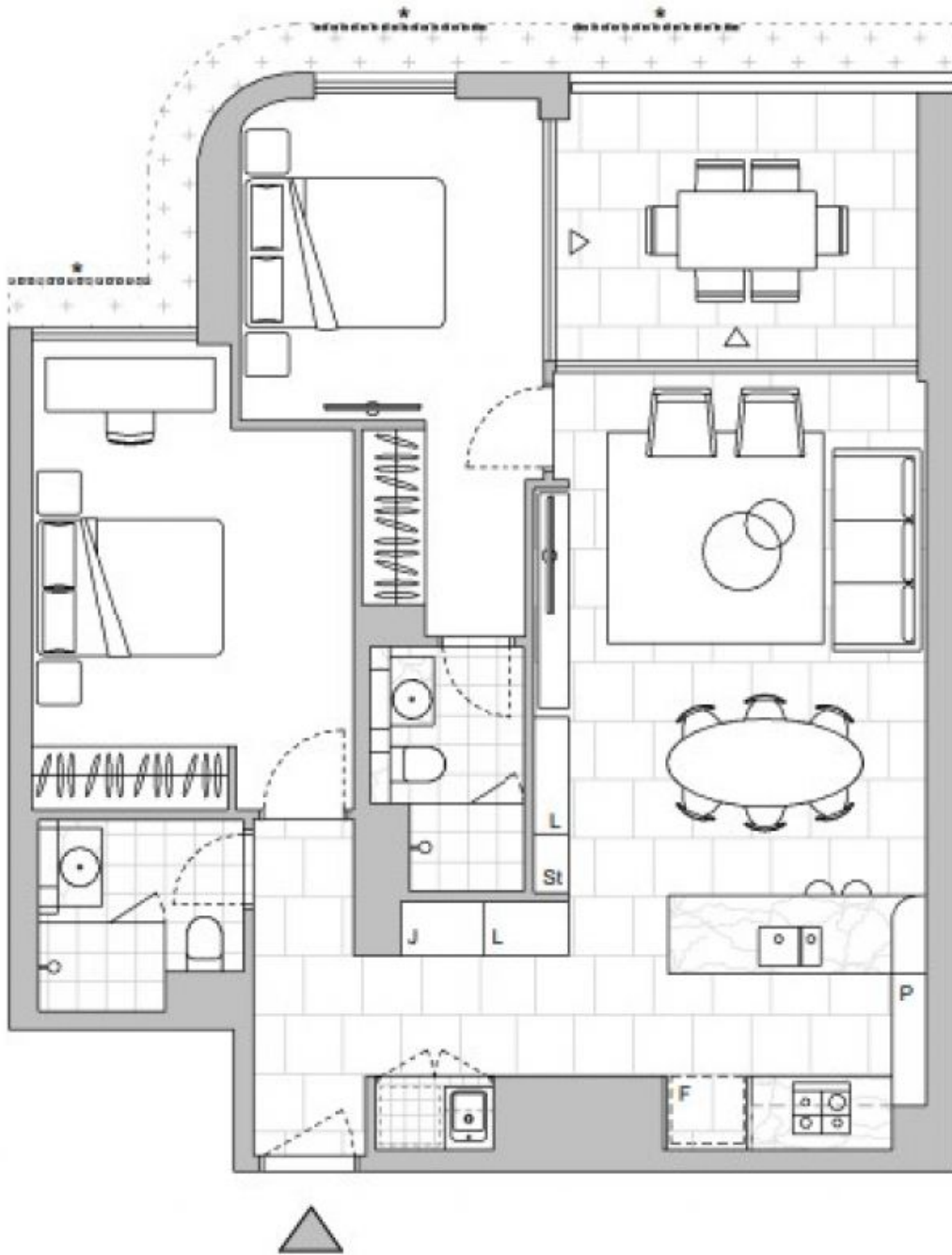
Brand New North Facing 2 Bedroom Apartment With Parking in NINE by Mirvac
Welcome to NINE by Mirvac

Nestled within the picturesque Lower North Shore, just 6km from Sydney's vibrant CBD and a mere 3.2km from the heart of North Sydney, resides the highly anticipated NINE by Mirvac. Embracing a lifestyle at NINE offers seamless connections, with the convenience of Artarmon Train Station (only 1.7km away), the bustling Chatswood CBD (merely 3.9km away), and easy access to the M1 & M2 road networks. This haven is also surrounded by local boutiques, esteemed schools, verdant parklands, a state-of-the-art leisure center, and an array of delectable dining options.

Leased Contact: Georgia Glynn
02 8588 8888
0481 388 777
Christine Howison
02 8588 8888
0459 222 085

Type: Apartment
Date Available: 30/06/2024
https://www.resbymirvac.com

This 86sqm, 1 bedroom apartment features:



Plans shown are only indicative of layout. Dimensions are approximate.

Willoughby, NSW
211/17 Richmond Road