



## St Leonards, NSW

2810/486 Pacific Highway

**1**  
BED

**1**  
BATH



### Luxe 1 Bedroom + Study Apartment with Harbour & City Views in St Leonards Square

Welcome to St Leonards Square by Mirvac

Situated in the prestigious heart of Sydney's Lower North Shore, St Leonards Square offers a plethora of opulent amenities, including exclusive resident access to a lavish swimming pool, rejuvenating spa, private cinema room, and state-of-the-art gym with personalized concierge service. With an array of gourmet restaurants, chic cafes, and a convenient grocery store just steps away, luxury living is redefined at your doorstep.

This 28th floor, 1 bedroom + separate study apartment features:

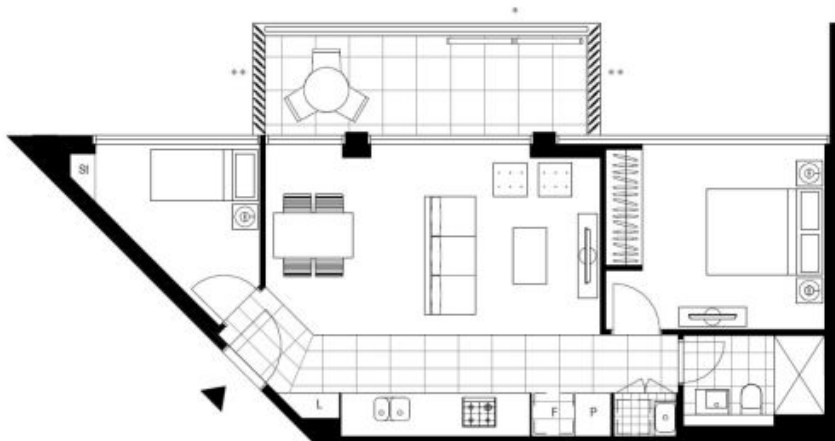
**\$890 per week | Deposit Taken!**

**Contact:** Georgia Glynn  
02 8588 8888  
0481 388 777

**Type:** Apartment




**Date Available:** 16/07/2024

**<https://www.resbymirvac.com>**



Please note that this floor plan is a guide only  
The information contained herein is not guaranteed.  
Dimensions are approximate.  
Prospective renters must rely on their own enquiries.

2810/486 Pacific Hwy, St Leonards

    
1+S 1 0

 real estate  
services  
by mirvac

Plans shown are only indicative of layout. Dimensions are approximate.

**St Leonards, NSW**  
2810/486 Pacific Highway