



## Glebe, NSW

513/172 Ross Street

**2** BED **2** BATH **1** CAR 

### Oversized North-Facing 2-Bedroom Apartment in Vance in Mirvac's Harold Park!

Welcome to Harold Park, Glebe's Secret Backyard.

In the charming enclave of Harold Park, you'll discover a picturesque parkside setting, just a leisurely stroll from Glebe Foreshore. Merely steps away, The Tramsheds retail precinct beckons, boasting delightful cafes, a boutique grocery store, renowned restaurants, and even a convenient medical centre. Plus, enjoy close proximity to the light rail, schools, and the city, all just a short distance away, ensuring convenience and connectivity at your fingertips.

This 105sqm, 5th floor apartment features:

### Deposit Taken!

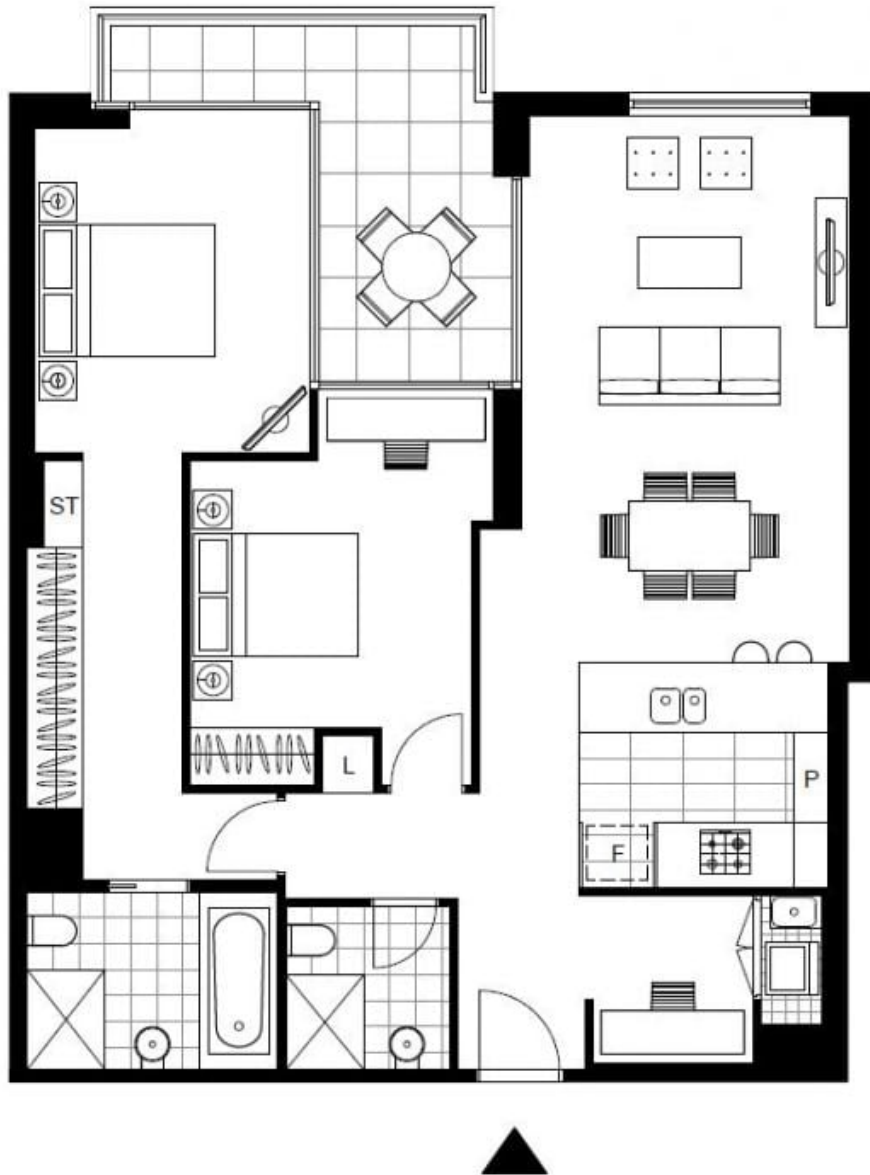
**Contact:** Naz Sabzpour  
02 8588 8888  
0401 545 440

**Type:** Apartment

**Date Available:** 04/07/2024

**Bond:** \$4400

**<https://www.resbymirvac.com>**



Plans shown are only indicative of layout. Dimensions are approximate.

**Glebe, NSW**  
513/172 Ross Street