



Glebe, NSW

510/172 Ross Street

3 BED **2** BATH **2** CAR 

Sleek 3 Bedroom Apartment in Mirvac's Harold Park, Glebe

Welcome to Harold Park, Glebe's Secret Backyard.

Here in Harold Park you will find yourself in an idyllic parkside location, with only a short walk to Glebe Foreshore. Just meters away, The Tramsheds retail precinct resides featuring cafes, a grocery store, restaurants and a medical centre.

This 137sqm, 5th floor Apartment features:

- Large bedrooms with floor to ceiling built-in wardrobes
- Open-plan living and dining area flowing onto balcony
- Modern kitchen with stone benchtops and Miele appliances

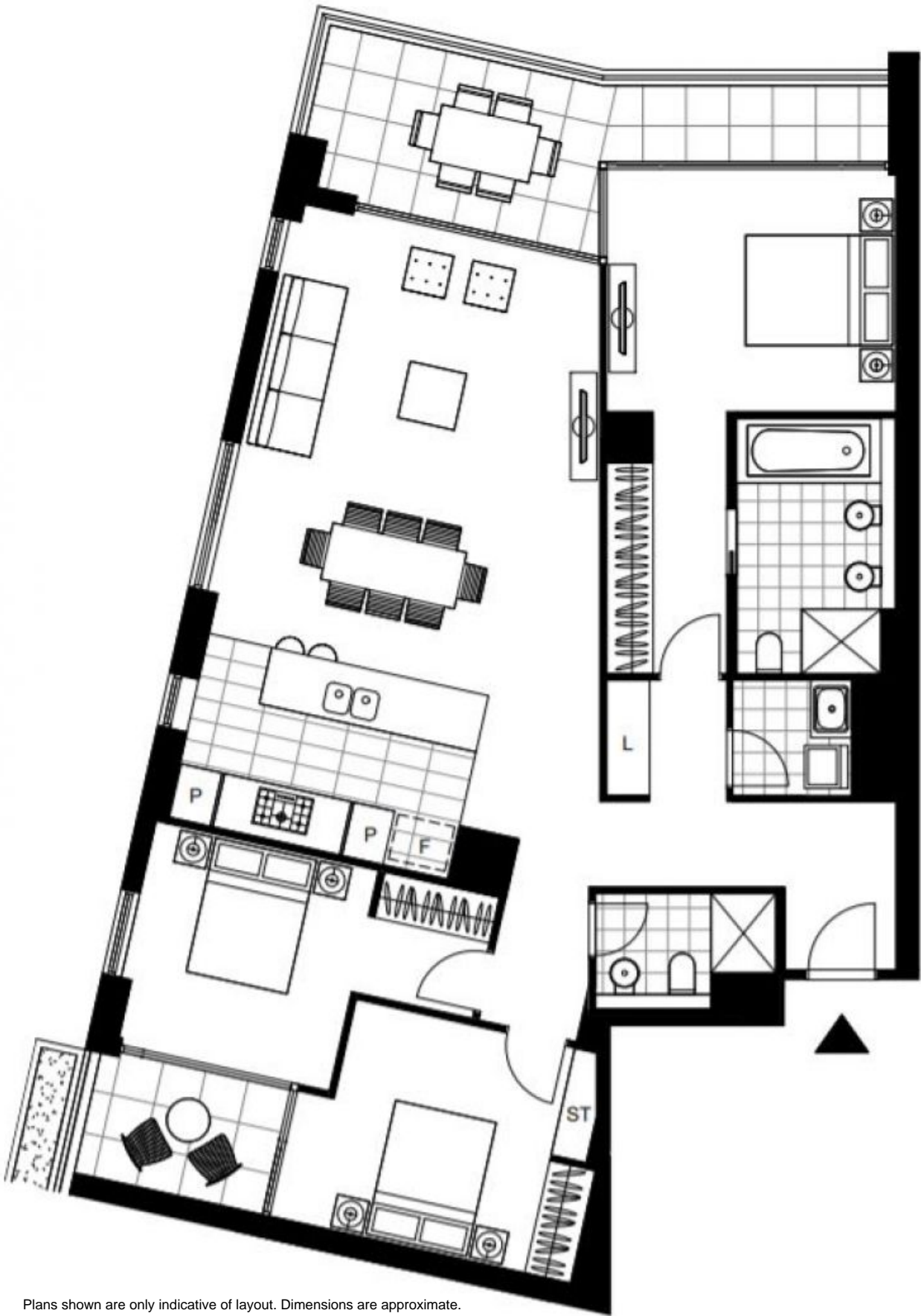
\$1,500 pw | Deposit Taken!

Contact: Naz Sabzpour
02 8588 8888
0401 545 440

Type: Apartment

Date Available: 04/07/2024

<https://www.resbymirvac.com>



Plans shown are only indicative of layout. Dimensions are approximate.

Glebe, NSW
510/172 Ross Street