



Bondi, NSW
5602/34 Wellington Street

1
BED

1
BATH



Stunning Garden-Facing 1 Bedroom Apartment with Water Views in Bondi

Welcome to The Moreton at Bondi

Situated just off Bondi Road, you will find yourself on the doorstep of local shops and cafes and within minutes of Sydney's famous Bondi Beach. Set amongst luscious landscaped grounds, residents will enjoy outdoor BBQ facilities and seating areas amongst the Moreton Bay fig trees.

This oversized, 6th floor apartment features:

- Well-appointed bedroom with built-in wardrobes
- Tiled living and dining area with TV unit, great for entertaining
- Sleek designer kitchen with stone benchtops and built-in Miele appliances

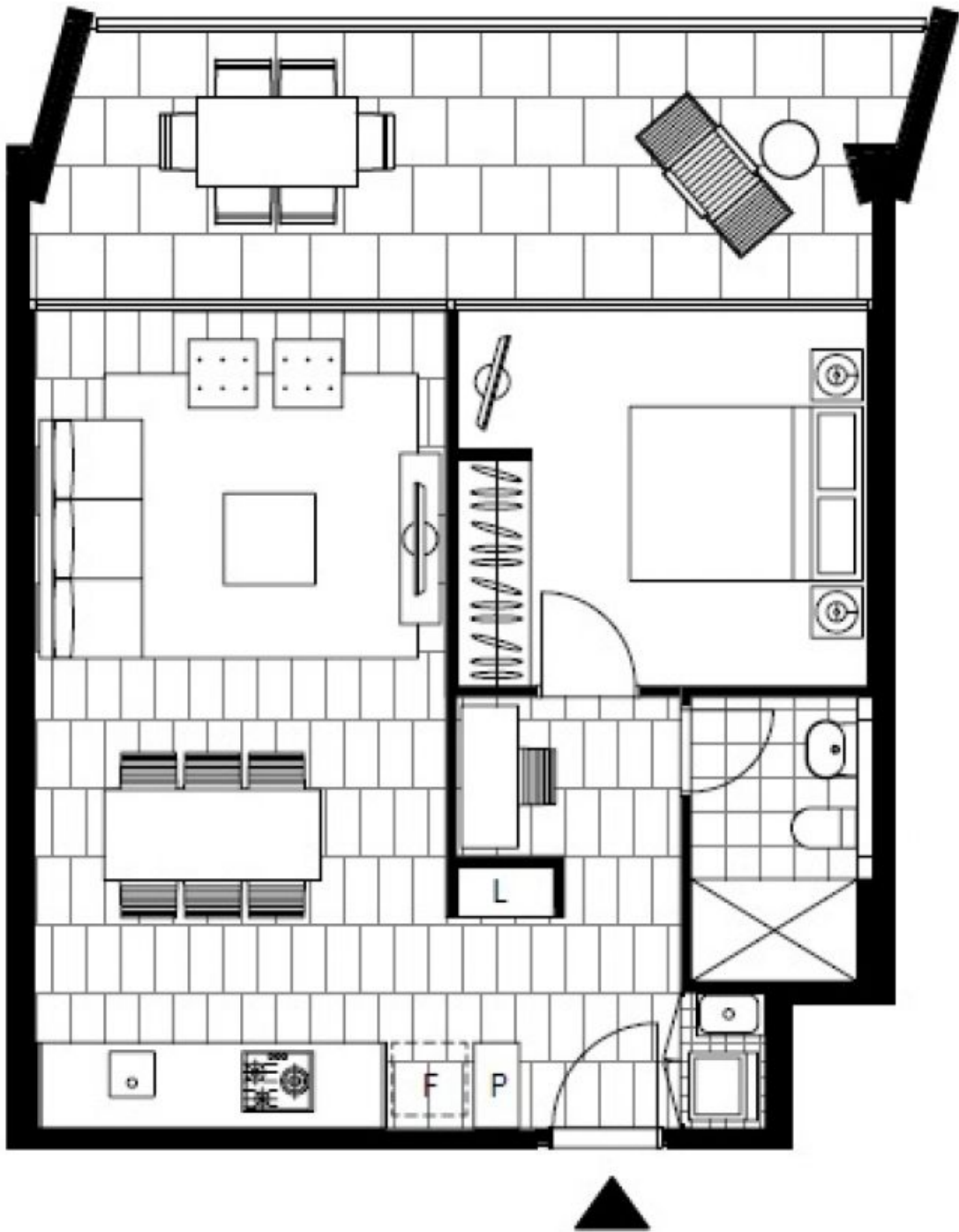
DEPOSIT TAKEN | \$920 per week

Contact: Georgia Glynn
02 8588 8888
0481 388 777
Kevin Tam
02 8588 8888
0481 735 222

Type: Apartment

Date Available: 28/06/2024

<https://www.resbymirvac.com>



LEVEL 6

Plans shown are only indicative of layout. Dimensions are approximate.

Bondi, NSW
5602/34 Wellington Street